

ADDENDUM NO. 1

DATE: October 23, 2018
FROM: Village of Villa Park Public Works Department
TO: All Planholders
PROJECT: **Jackson Pond Overflow**

The Bidding Documents for the subject project are hereby amended as follows. The attached Acknowledgement Form must be filled out and returned with your Bid.

CHANGE THE FOLLOWING ITEM(S) IN THE PLANS:

REPLACE:

Replace Page 2 of the Plans with the attachment included in this addendum. The revision was made to the quantity for pay item number 88 and pay item number 109 was added. The revisions are bubbled on the plan sheet.

Replace Page 9 of the Plans with the attachment included in this addendum. The revision made was the removal of the ComEd Primary Splice Boxes. The revisions are bubbled on the plan sheet.

Replace Page 34 of the Plans with the attachment included in this addendum. The revision made was the removal of the ComEd Primary Splice Box Details. The revisions are crossed out on the plan sheet.

Replace Pages 13 and 16 of the Plans with the attachment included in this addendum. The revision made was the addition of the GEOTEXTILE FABRIC BARRIER. The revisions are bubbled on the plan sheet.

CHANGE THE FOLLOWING ITEM(S) IN THE SPECIFICATIONS:

IN “SCHEDULES OF PRICES BLR 12200a”:

REPLACE:

Replace page 4-4 and 4-5 with the attachments included in this addendum. The revisions were as follows:

- Pay Item #88, ComEd Primary Splice Box (Install Only) is not required. The quantity was changed to zero.
- Pay Item #109, Geotextile Fabric Barrier was added.

IN “PAY ITEM SPECIAL PROVISIONS”:

REPLACE:

Replace sheet 70 with the attachments included in this addendum. The revisions were made to Pay Item #88, ComEd Primary Splice Box (Install Only) as follows:

Pay Item #88 is not required, the item has been crossed out in the attachment.

ADD:

Add sheet 81A directly behind sheet 81 with the attachments included in this addendum. Pay Item #109, Geotextile Fabric Barrier was added.

END OF ADDENDUM NO. 1

ADDENDUM NO. 1 ACKNOWLEDGMENT FORM

I/We hereby acknowledge receipt of the following documents pertaining to **ADDENDUM No. 1** to the Bidding Documents for the Village of Villa Park's **JACKSON POND OVERFLOW**.

Addendum No. 1	2 pages
Attachments	
1. Plan Sheets	5 pages
2. Bid Book Sheets	4 pages
Acknowledgment Form	1 page
TOTAL	12 pages

Name: _____

Title: _____

Company: _____

Signature: _____

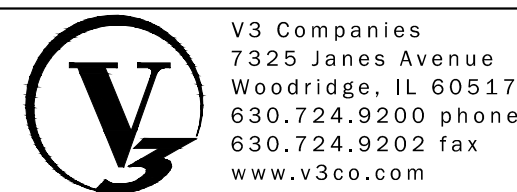
Date: _____

SP	ITEM NO.	IDOT REF. NO.	ITEM	UNIT	QUANTITY
	1	20100110	TREE REMOVAL (6 TO 15 UNITS DIAMETER)	UNIT	196
	2	20100210	TREE REMOVAL (OVER 15 UNITS DIAMETER)	UNIT	918
	3	20101000	TEMPORARY FENCE	FOOT	546
	4	20200100	EARTH EXCAVATION	CU YD	36580
	5	20201200	REMOVAL AND DISPOSAL OF UNSUITABLE MATERIALS	CU YD	3212
	6	20700220	POROUS GRANULAR EMBANKMENT	CU YD	45
	7	20800150	TRENCH BACKFILL	CU YD	511
	8	21101505	TOPSOIL EXCAVATION AND PLACEMENT	CU YD	5130
*	9	21101645	TOPSOIL FURNISH AND PLACE, 12"	SQ YD	24660
*	10	25000100	SEEDING, CLASS 1	AC	7
	11	25100630	EROSION CONTROL BLANKET	SQ YD	15904
	12	28000400	PERIMETER EROSION BARRIER	FOOT	2284
*	13	28000510	INLET FILTERS	EACH	11
	14	28100107	STONE RIPRAP, CLASS A4	SQ YD	71
*	15	28200200	FILTER FABRIC	SQ YD	71
	16	35101600	AGGREGATE BASE COURSE, TYPE B 4"	SQ YD	25
	17	35101800	AGGREGATE BASE COURSE, TYPE B 6"	SQ YD	1507
*	18	35300200	PORTLAND CEMENT CONCRETE BASE COURSE 7"	SQ YD	100
*	19	35300700	PORTLAND CEMENT CONCRETE BASE COURSE 12"	SQ YD	105
	20	40300290	BITUMINOUS MATERIALS (TACK COAT)	POUNDS	582
*	21	40603335	HOT-MIX ASPHALT SURFACE COURSE, MIX "D", N50	TON	48
	22	42000300	PORTLAND CEMENT CONCRETE PAVEMENT, 8"	SQ YD	25
*	23	42400200	PORTLAND CEMENT CONCRETE SIDEWALK 5"	SQ FT	4137
*	24	42400800	DETECTABLE WARNINGS	SQ FT	21
*	25	44000600	SIDEWALK REMOVAL	SQ FT	3930
	26	48100500	AGGREGATE SHOULDERS, TYPE A 6"	SQ YD	287
	27	50104400	CONCRETE HEADWALL REMOVAL	EACH	2
	28	50105220	PIPE CULVERT REMOVAL	FOOT	32
	29	50200100	STRUCTURE EXCAVATION	CU YD	127
	30	50300225	CONCRETE STRUCTURES	CU YD	26
	31	50800205	REINFORCEMENT BARS, EPOXY COATED	POUND	3880
	32	54213657	PRECAST REINFORCED CONCRETE FLARED END SECTION 12"	EACH	1
	33	54213675	PRECAST REINFORCED CONCRETE FLARED END SECTION 30"	EACH	1
	34	56100600	WATER MAIN 6"	FOOT	20
*	35	56106300	ADJUSTING WATER MAIN 6"	FOOT	58

SP	ITEM NO.	IDOT REF. NO.	ITEM	UNIT	QUANTITY
	36	56109418	DUCTILE IRON WATER MAIN FITTINGS 6" 45.00 DEGREE BEND	EACH	4
	37	60100060	CONCRETE HEADWALLS FOR PIPE DRAINS	EACH	1
	38	60108106	PIPE UNDERDRAINS, TYPE 1, 6"	FOOT	566
	39	60203805	CATCH BASINS, TYPE A, 5'-DIAMETER, TYPE 1 FRAME, OPEN LID	EACH	1
	40	60204825	CATCH BASINS, TYPE A, 5'-DIAMETER, TYPE 11V FRAME AND GRATE	EACH	1
	41	60207915	CATCH BASINS, TYPE C, TYPE 11V FRAME AND GRATE	EACH	1
	42	60221100	MANHOLES, TYPE A, 5' DIAMETER, TYPE 1 FRAME, CLOSED LID	EACH	7
	43	60236200	INLETS, TYPE A, TYPE 8 GRATE	EACH	5
*	44	60603800	COMBINATION CONCRETE CURB AND GUTTER, TYPE B-6.12	FOOT	139
*	45	66400105	CHAIN LINK FENCE, HEIGHT 4'	FOOT	390
*	46	66400305	CHAIN LINK FENCE, HEIGHT 6'	FOOT	615
*	47	66400505	CHAIN LINK FENCE, HEIGHT 8'	FOOT	270
*	48	66404700	CHAIN LINK GATES, 8' X 4' SINGLE	EACH	2
*	49	66407500	CHAIN LINK GATES, 4' X 10' DOUBLE	EACH	4
	50	66900200	NON-SPECIAL WASTE DISPOSAL	CU YD	3212
	51	78000200	THERMOPLASTIC PAVEMENT MARKING - LINE 4"	FOOT	20
	52	78000400	THERMOPLASTIC PAVEMENT MARKING - LINE 6"	FOOT	10
	53	78000600	THERMOPLASTIC PAVEMENT MARKING - LINE 12"	FOOT	36
	54	78000650	THERMOPLASTIC PAVEMENT MARKING - LINE 24"	FOOT	15
*	55	80400100	ELECTRIC SERVICE INSTALLATION	EACH	1
	56	81603000	UNIT DUCT, 600V, 2-1C NO.8, 1/C NO.8 GROUND, (XLP-TYPE USE), 3/4" DIA.	FOOT	245
	57	81603010	UNIT DUCT, 600V, 2-1C NO.10, 1/C NO.10 GROUND, (XLP-TYPE USE), 3/4" DIA. POLYETHYLENE	FOOT	40
	58	81603035	UNIT DUCT, 600V, 2-1C NO.6, 1/C NO.6 GROUND, (XLP-TYPE USE), 1" DIA. POLYETHYLENE	FOOT	40
	59	83600200	LIGHT POLE FOUNDATION, 24" DIAMETER	FOOT	12
*	60	84200500	REMOVAL OF PEDESTRIAN LIGHT FIXTURE, SALVAGE	EACH	2
*	61	84200600	REMOVAL OF LIGHTING UNIT, SALVAGE	EACH	3
	62	84200804	REMOVAL OF POLE FOUNDATION	EACH	3
	63	89502300	REMOVE ELECTRIC CABLE FROM CONDUIT	FOOT	2400
	64	550A0340	STORM SEWER, CLASS A, TYPE 2 12"	FOOT	59
	65	550A0380	STORM SEWERS, CLASS A, TYPE 2 18"	FOOT	25
	66	550A0430	STORM SEWER, CLASS A, TYPE 2 30"	FOOT	848
	67	550B0050	STORM SEWERS, CLASS B, TYPE 1 12"	FOOT	86
*	68	K1001988	IRRIGATION SYSTEM SPECIAL	L SUM	1
*	69	X0320067	BENCH REMOVAL	EACH	3
*	70	X0321158	PLAYERS BENCH	EACH	2

SP	ITEM NO.	IDOT REF. NO.	ITEM	UNIT	QUANTITY
*	71	X0322508	PEDESTRIAN TRUSS SUPERSTRUCTURE	SQ FT	141
*	72	X0323868	DRAINAGE RESTRICTOR	EACH	1
*	73	X0327172	REMOVE AND REPLACE SIGN AND SUPPORTS	EACH	1
*	74	X1200001	DRAINAGE WEIR	EACH	1
*	75	X2130010	EXPLORATION TRENCH, SPECIAL	FOOT	20
*	76	X5504130	STORM SEWERS, DUCTILE IRON PIPE 30"	FOOT	38
*	77	X7010216	TRAFFIC CONTROL AND PROTECTION (SPECIAL)	L SUM	1
*	78	XX003668	PRECONSTRUCTION VIDEO RECORDING	L SUM	1
*	79	Z0013300	CONCRETE REMOVAL (SPECIAL)	SQ YD	104
*	80	Z0013797	STABILIZED CONSTRUCTION ENTRANCE	SQ YD	45
	81	Z0013798	CONSTRUCTION LAYOUT	L SUM	1
*	82	Z0022800	FENCE REMOVAL	FOOT	699
*	83		4' BY 4' BOX STRUCTURE	EACH	1
*	84		BASEBALL INFIELD MIX	SQ YD	1319
*	85		BASES	LSUM	1
*	86		BLEACHERS	EACH	1
*	87		BOX PACKING CLAY	SQ YD	11
*	88		COMED PRIMARY SPLICE BOX (INSTALL ONLY)	EACH	0
*	89		CULVERT INLET PROTECTION	EACH	1
*	90		DUGOUT REMOVAL	EACH	2
*	91		ELECTRICAL CABINET, COMPLETE	EACH	1
*	92		GRASS PAVERS	SQ FT	420
*	93		GRATING FOR CONCRETE FLARED END SECTION 12"	EACH	1
*	94		GRATING FOR CONCRETE FLARED END SECTION 30"	EACH	1
*	95		LIMESTONE SCREENINGS	SQ YD	1292
*	96		NETTING	L SUM	1
*	97		PEDESTRIAN LIGHT UNIT, COMPLETE	EACH	2
*	98		PEDESTRIAN LIGHT UNIT, FIXTURE ONLY	EACH	2
*	99		PLASTIC FLARED END SECTION	EACH	4
*	100		PLAYING FIELD SEEDING	SQ YD	9893
*	101		PLAYING FIELD SODDING	SQ YD	887
*	102		RAILING	FOOT	116
*	103		REMOVE AND RELOCATE BENCH	EACH	1
*	104		TRANSFORMER PAD	EACH	1
*	105		UNDERGROUND COMED PRIMARY CONDUIT, 4"	FOOT	1150
*	106		CONTINGENCY ALLOWANCE	DOLLAR	50000
*	107		WATER USAGE CREDIT	TGAL	1
*	108		WATER USAGE DEDUCTION	TGAL	1
*	109		GEOTEXTILE FABRIC BARRIER	SQ YD	18070

NOTE: A SPECIAL PROVISION IS PROVIDED FOR ALL ITEMS MARKED WITH AN ASTERISK (*)



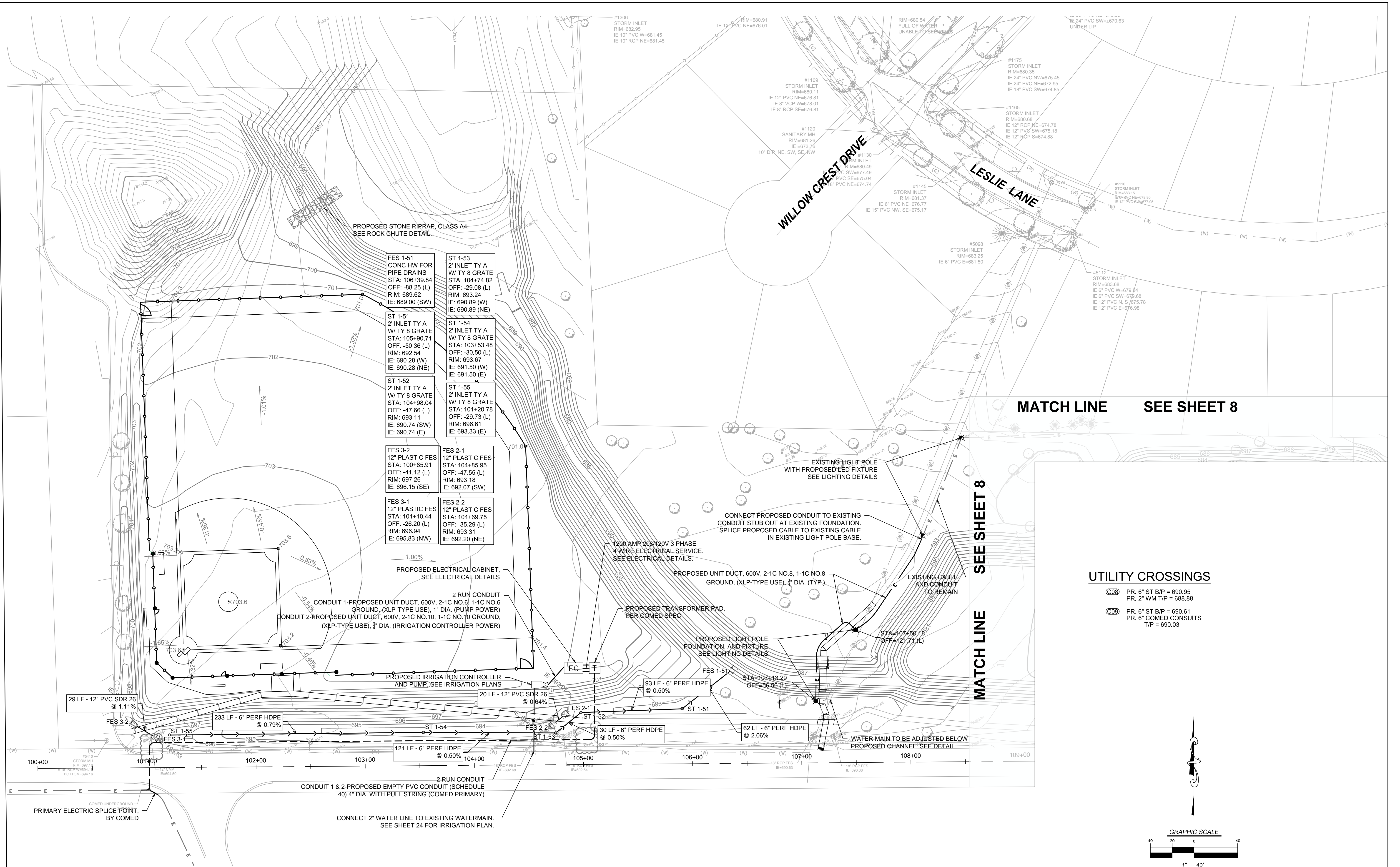
V3 Companies
7325 James Avenue
Woodridge, IL 60517
630.724.9200 phone
630.724.9202 fax
www.v3co.com

DESIGNED -- CWH	REVISED 10/22/18 ADDENDUM #1
DRAWN -- LEH	REVISED
CHECKED -- DLM	REVISED
DATE -- 04-27-18	REVISED

JACKSON POND OVERFLOW PROJECT

SUMMARY OF QUANTITIES

F.A. RTE.	SECTION	COUNTY	TOTAL SHEETS	SHEET NO.
				2
DUPAGE			CONTRACT NO.	
ILLINOIS FED. AID PROJECT				

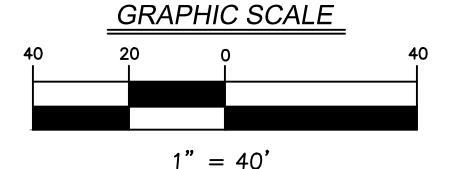


MATCH LINE SEE SHEET 8

SEE SHEET 8

UTILITY CROSSINGS

- COB PR. 6" ST B/P = 690.95
PR. 2" WM T/P = 688.88
- CO9 PR. 6" ST B/P = 690.61
PR. 6" COMED CONSUITS
T/P = 690.03



V3 Companies
 7325 Jane's Avenue
 Woodridge, IL 60517
 630.724.9200 phone
 630.724.9202 fax
 www.v3co.com

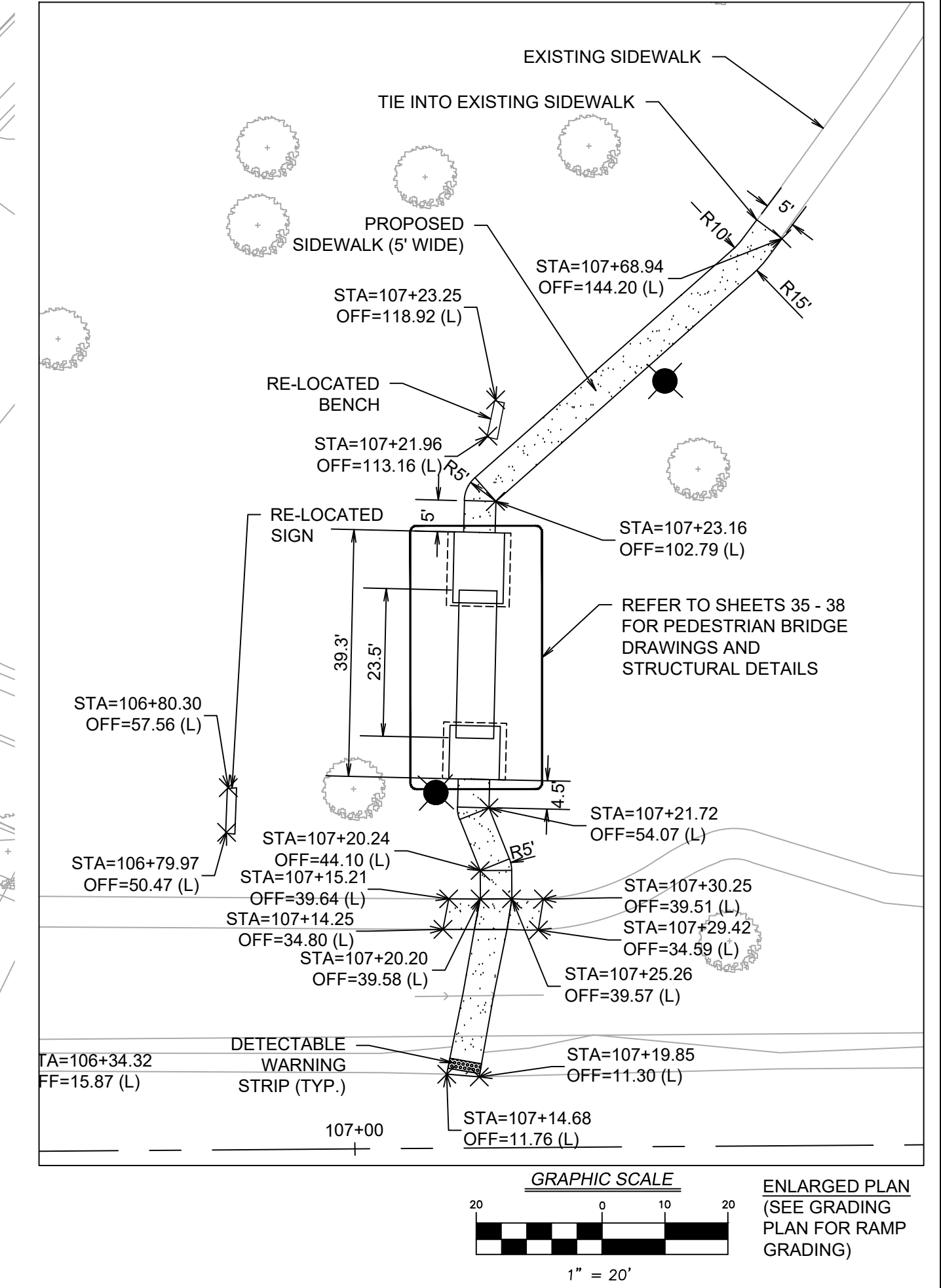
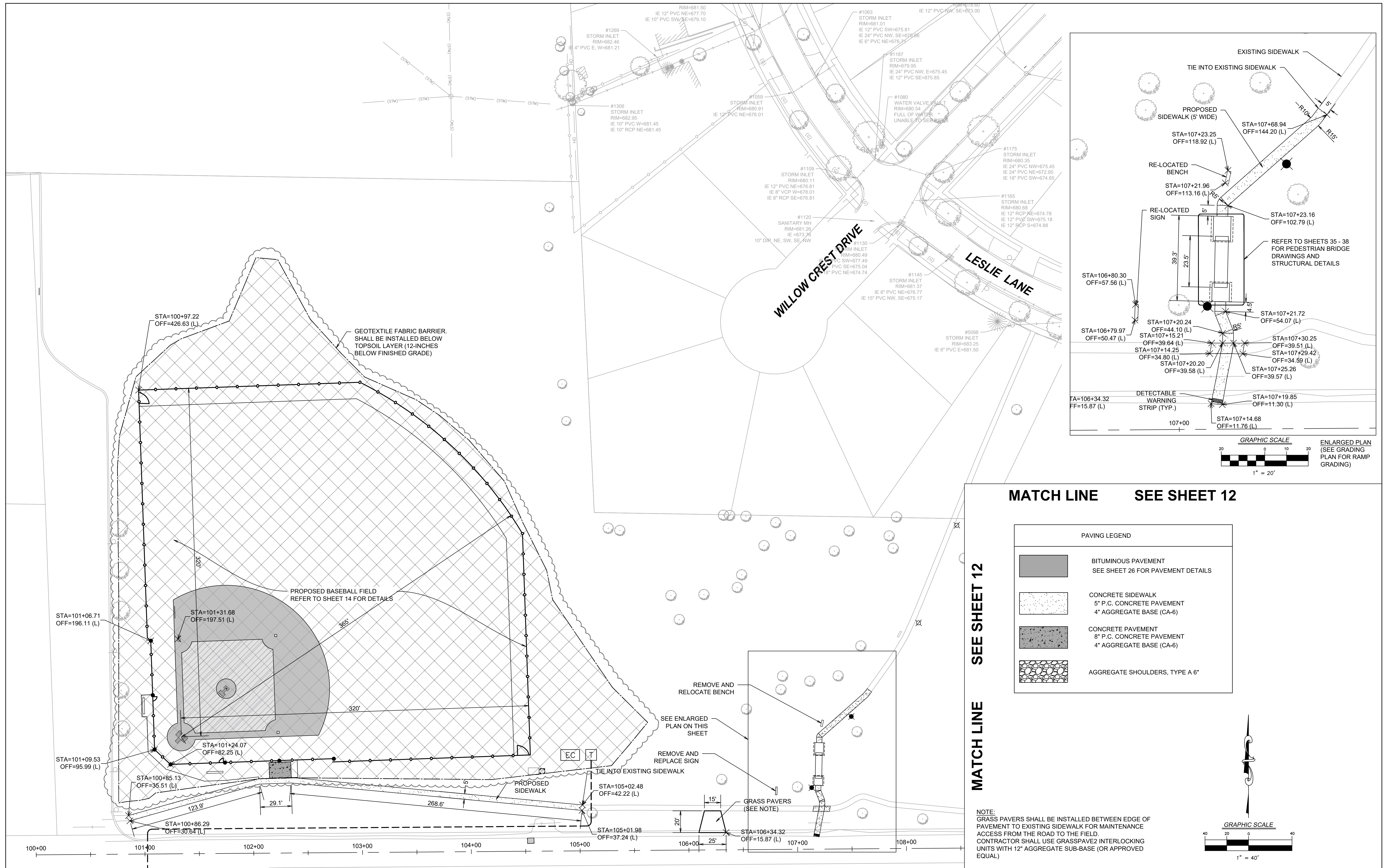
PLOT SCALE =
 PLOT DATE =

DESIGNED	— CWH	REVISED 10/22/18	ADDENDUM #1
DRAWN	— LEH	REVISED	---
CHECKED	— DLM	REVISED	---
DATE	— 04-27-18	REVISED	---

JACKSON POND OVERFLOW PROJECT

UTILITY PLAN — AREA 2

F.A. RTE.	SECTION	COUNTY	TOTAL SHEETS	SHEET NO.
		DUPAGE	9	9
CONTRACT NO. _____				
ILLINOIS FED. AID PROJECT				



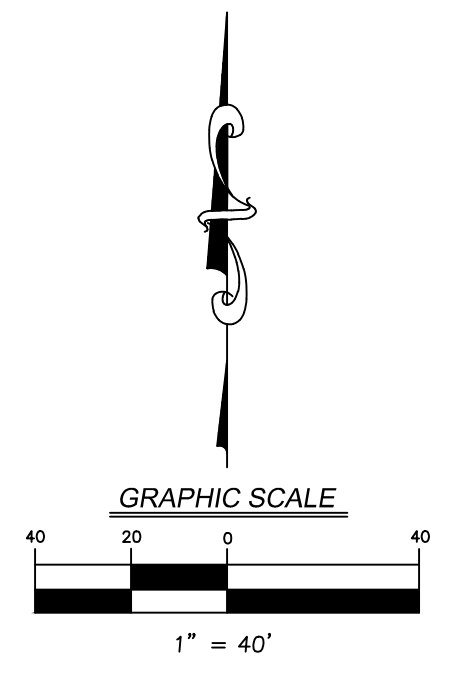
MATCH LINE SEE SHEET 12

PAVING LEGEND	
	BITUMINOUS PAVEMENT SEE SHEET 26 FOR PAVEMENT DETAILS
	CONCRETE SIDEWALK 5" P.C. CONCRETE PAVEMENT 4" AGGREGATE BASE (CA-6)
	CONCRETE PAVEMENT 8" P.C. CONCRETE PAVEMENT 4" AGGREGATE BASE (CA-6)
	AGGREGATE SHOULDERS, TYPE A 6"

SEE SHEET 12

MATCH LINE

NOTE:
GRASS PAVERS SHALL BE INSTALLED BETWEEN EDGE OF PAVEMENT TO EXISTING SIDEWALK FOR MAINTENANCE ACCESS FROM THE ROAD TO THE FIELD.
CONTRACTOR SHALL USE GRASSPAVE2 INTERLOCKING UNITS WITH 12" AGGREGATE SUB-BASE (OR APPROVED EQUAL)



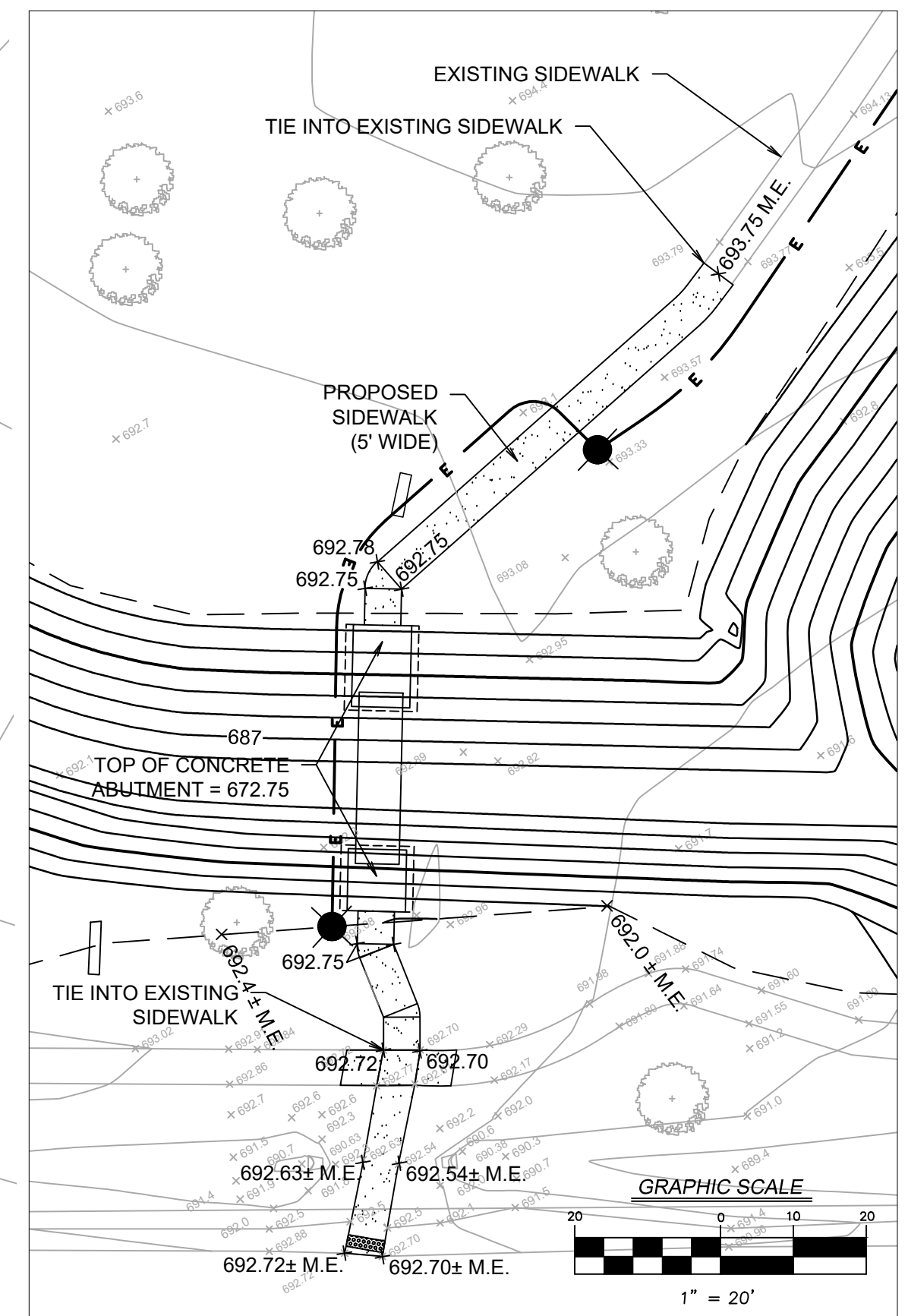
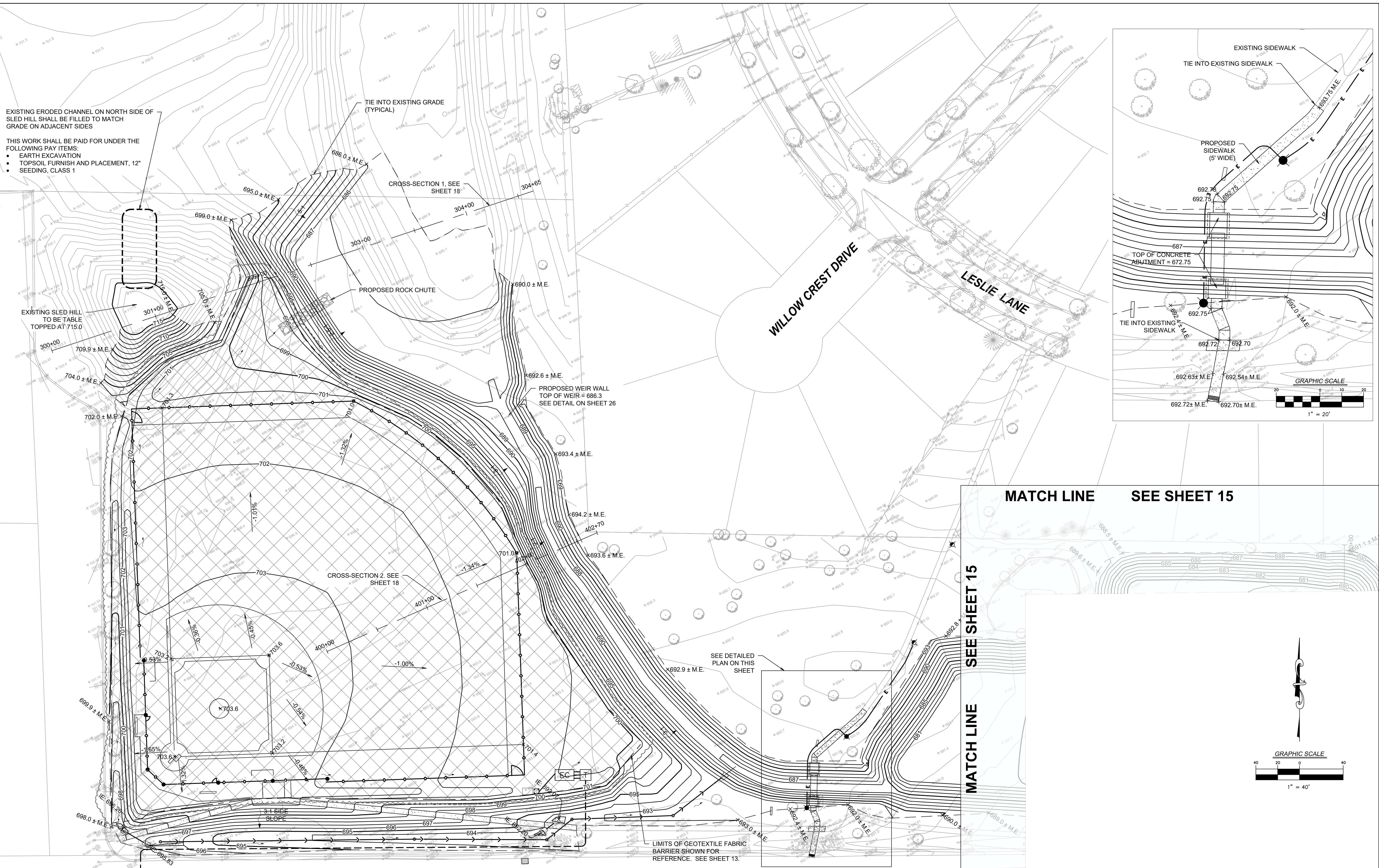
V3 Companies
7325 James Avenue
Woodridge, IL 60517
630.724.9200 phone
630.724.9202 fax
www.v3co.com

DESIGNED — CWH	REVISED 10/22/18 ADDENDUM #1
DRAWN — LEH	REVISED
CHECKED — DLM	REVISED
DATE — 04-27-18	REVISED

JACKSON POND OVERFLOW PROJECT

LAYOUT PLAN — AREA 2

F.A. RTE.	SECTION	COUNTY	TOTAL SHEETS	SHEET NO.
			13	13
CONTRACT NO.				
ILLINOIS FED. AID PROJECT				



V3 Companies
 7325 James Avenue
 Woodridge, IL 60517
 630.724.9200 phone
 630.724.9202 fax
 www.v3co.com

DESIGNED — CWH
 DRAWN — LEH
 CHECKED — DLM
 DATE — 04-27-18

REVISED 10/22/18 ADDENDUM #1
 REVISED
 REVISED
 REVISED

JACKSON POND OVERFLOW PROJECT

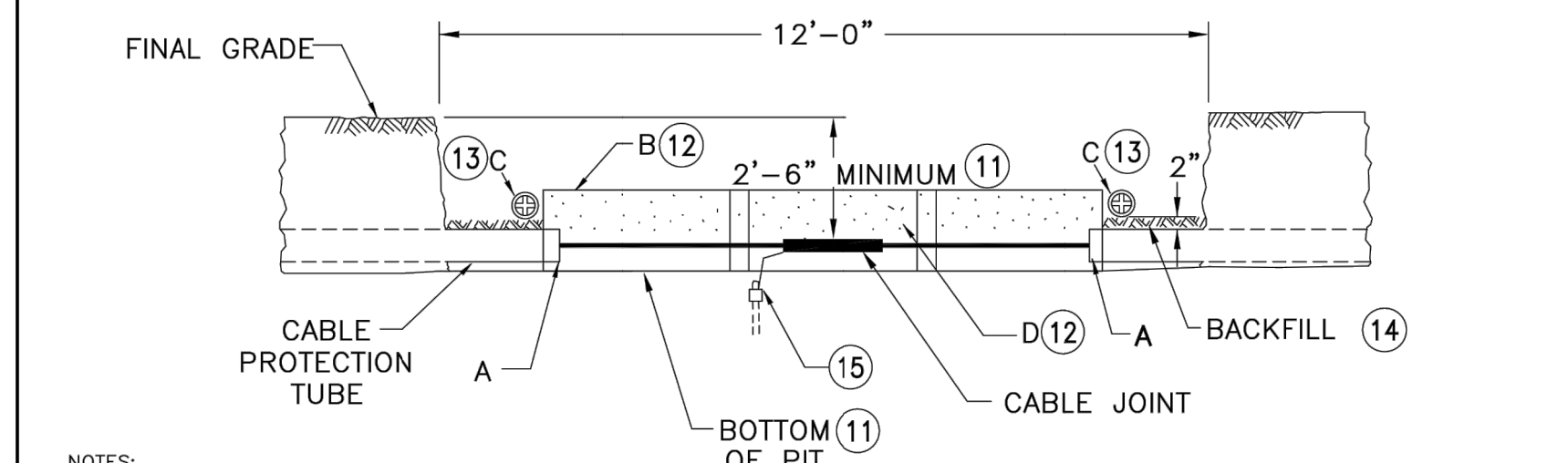
GRADING PLAN — AREA 2

F.A. RTE.	SECTION	COUNTY	TOTAL SHEETS	SHEET NO.
		DUPAGE	16	16
CONTRACT NO.				
ILLINOIS FED. AID PROJECT				

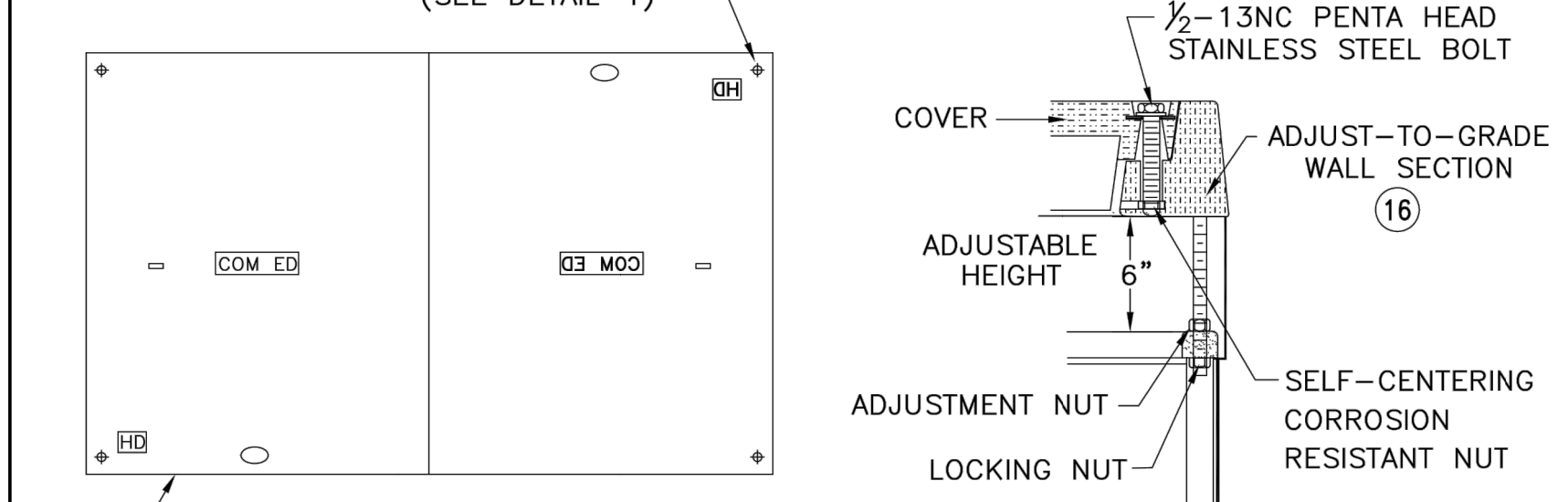
JOINT COVER/SPLICE BOX

- TYPE OF INSTALLATION
- C5279.A JOINT COVER (3-1/C 750kcmil STRAIGHT JOINTS MAXIMUM)
 - B TWO-PIECE COVER SPLICE BOX (3-1/C 500kcmil STRAIGHT JOINTS AND BELOW)
 - C THREE-PIECE COVER SPLICE BOX (3-1/C 750kcmil STRAIGHT JOINTS MAXIMUM)
 - D TWO-PIECE COVER SPLICE BOX (3-1/C 3/0 STRAIGHT JOINTS MAXIMUM)

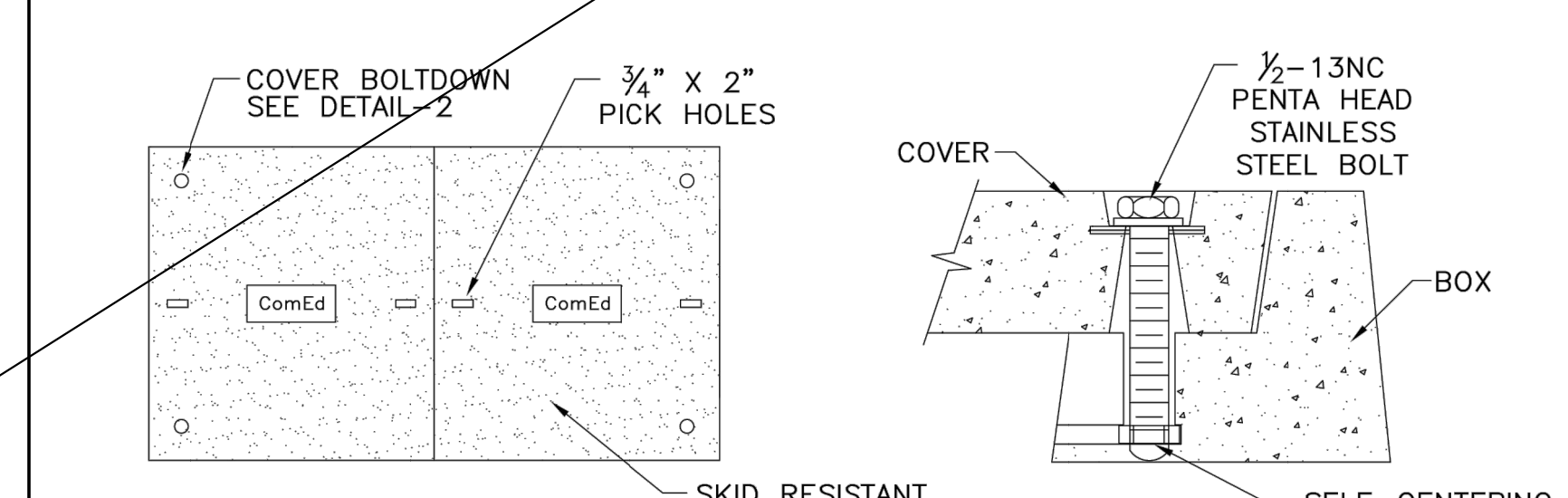
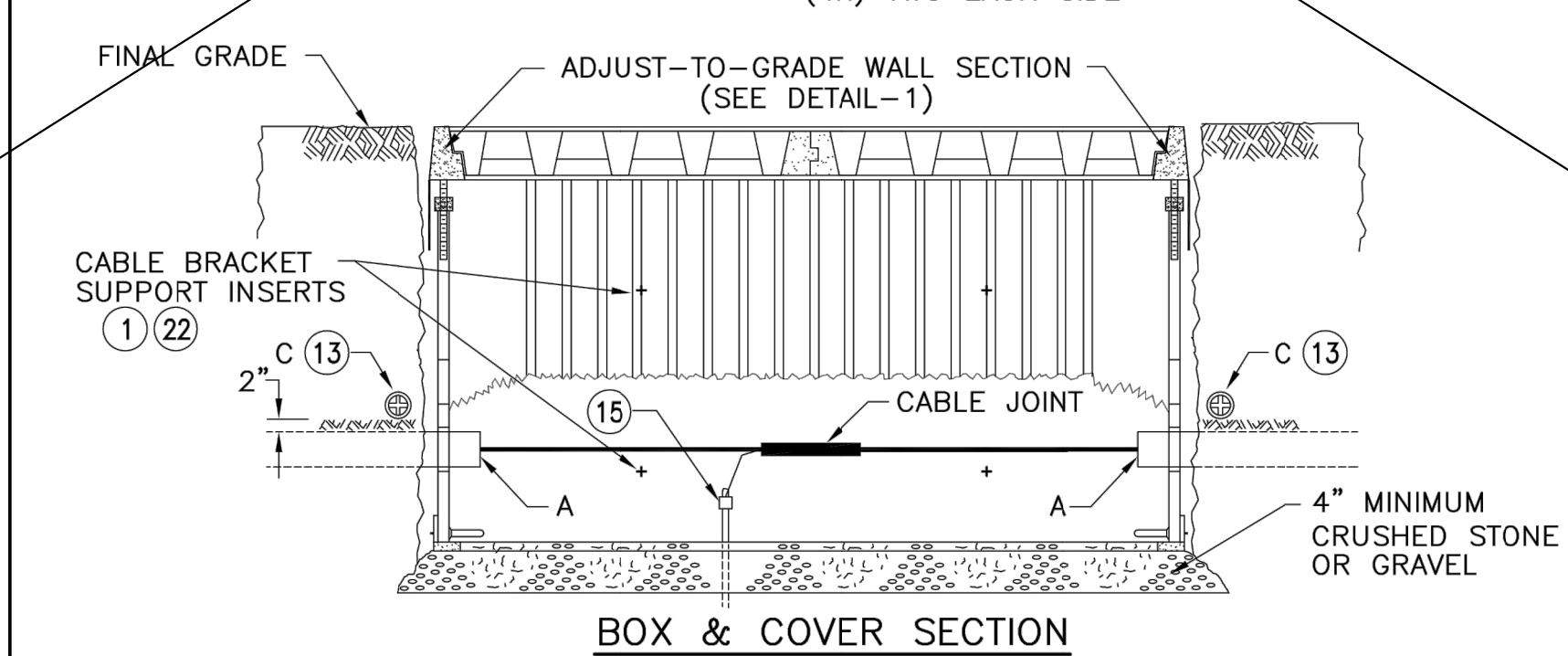
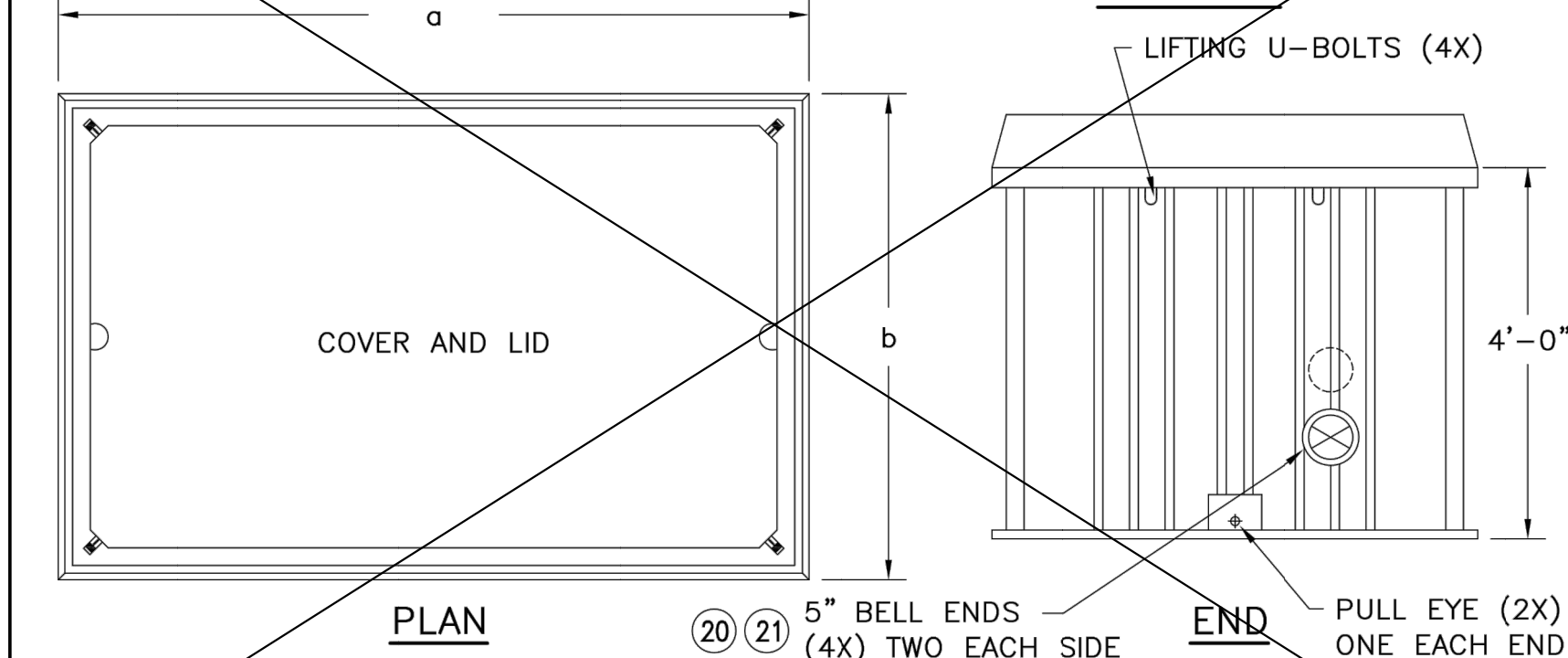
ITEM	CAT ID	DESCRIPTION	TABLE-1	CAT ID	UNIT	QUANTITY		
						A	B	C/D
A	CONDUIT CABLE SEALING FDM	C5194.A				2	4	4
B	BOX, SPLICE, 48 X 78 X 48 IN. STRAIGHT HEAVY DUTY, ADJUSTABLE	0000383280	EA					
	COVER, CABLE JOINT, 12 IN. HIGH X 12 IN. WIDE X 36 IN. LONG, P	0000655149	EA			3		
	BOX, SPLICE, 48 X 96 X 48 IN. STRAIGHT HEAVY DUTY, ADJUSTABLE	0000383279	EA					
	BOX, SPLICE, 30 X 60 X 24 OPENING, HEAVY DUTY, 3-4 IN. KNOCKOUT	0001604280	EA			1		1
C	MARKER, ELECTRONIC, MID-RANGE, RED, 4.5 IN. DIAMETER, POLYETHY	0000649202	EA			2	2	2
D	SAND, TORPEDO, NO. 2, KILN DRIED, 60 LB. BAG, IN MOISTURE RESI	0000701021	BG			16		
E	SUPPORT, BRACKET, 24 IN. CHANNEL, STEEL, GALVANIZED, JOSLYN J2	0000392067	EA			2	2	
F	ANCHOR, CONCRETE, 1/2-13, LENGTH 4-1/4 IN., NO WASHER AND NUT,	0000381064	EA			4	4	
G	WASHER, FLAT, 1/2 IN., 18/8 AUSTENITIC STAINLESS STEEL, ANSI/A	0000530427	EA			4	4	
H	WASHER, PLASTIC, 1/2 IN., PVC,	0000381600	EA			4	4	
J	NUT, HEAVY HEX, 1/2-13, AUSTENITIC ALLOY 304 STAINLESS STEEL,	0000530445	EA			4	4	
K	BRACKET, CABLE, 23-1/2 IN. LONG X 6 IN., STEEL, HOT GALVANIZED	0000392007	EA			2	2	
L	SADDLE, CABLE, 5-1/2 IN. INSULATING HIGH DENSITY POLYETHYLENE	0000392024	EA			4	4	
M	PIN, COTTER, 3/16 IN. DIA. X 4 IN. LONG, STAINLESS STEEL,	0000531994	EA			4	4	



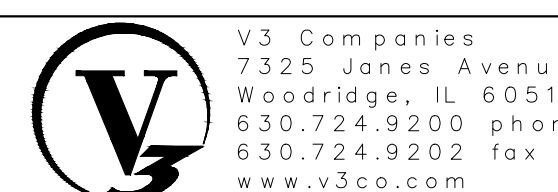
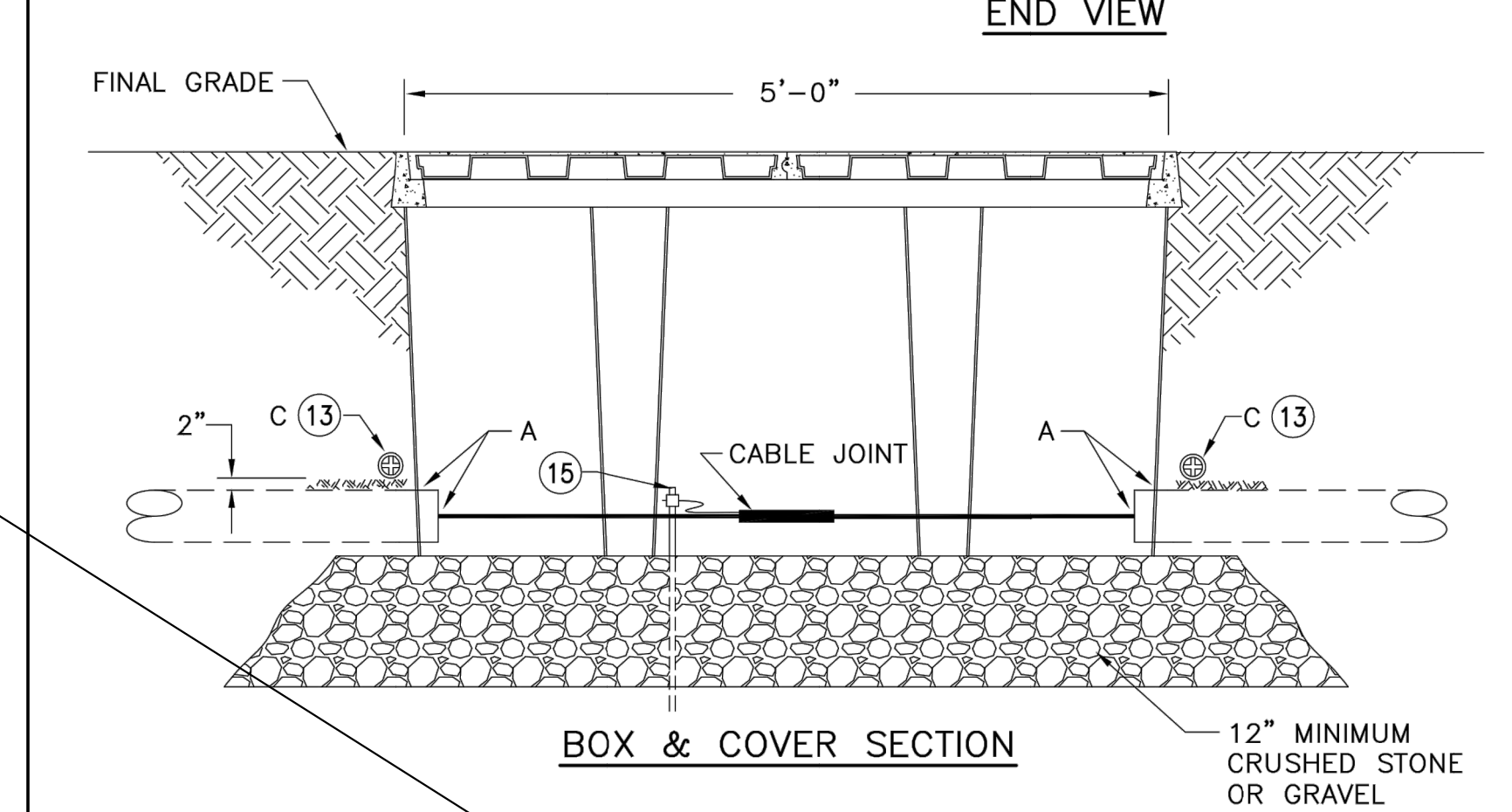
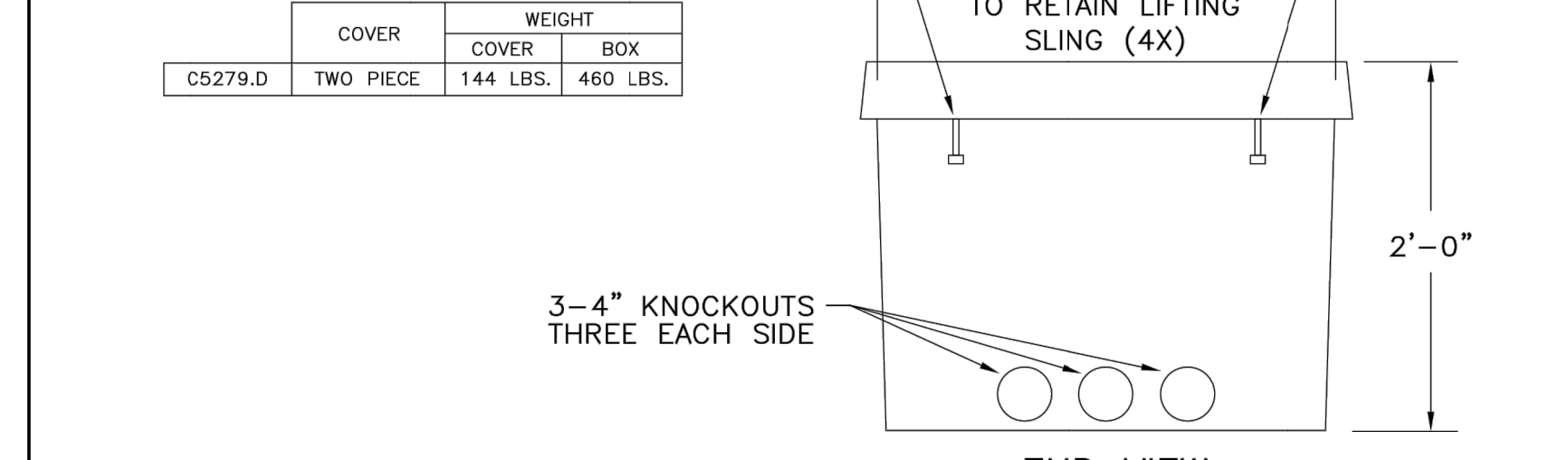
- NOTES:
- APPLICATION
- THIS STANDARD SHALL BE USED WHEN COVERING STRAIGHT JOINTS IN A SPLICE PIT OR SPLICE BOX. SPLICE BOX FOR USE IN PAVED AND UNPAVED PARKWAYS, NOT FOR USE IN STREETS.
- SUPPLEMENTARY MATERIAL
- FOR ADDITIONAL CABLE SUPPORTS AND INSTALLATION SEE C5050.
 - ANCHOR INSTALLATION INFORMATION IS SHOWN ON C5266.
- INFORMATION
- BOTTOM OF SPLICE-PIT SHALL BE UNDISTURBED OR WELL TAMPED EARTH FREE FROM ROCKS OR DEBRIS.
 - COVER CABLE AND JOINTS WITH SAND BEFORE INSTALLING COVERS.
 - LAY ELECTRONIC MARKER AT END OF CABLE PROTECTION TUBE ON APPROXIMATELY 2 INCHES OF BACKFILL.
 - BACKFILL SHALL BE FREE OF STONES, BROKEN GLASS, CANS, OR OTHER DEBRIS THAT MIGHT DAMAGE THE CABLE. IF THIS IS NOT AVAILABLE, SAND MAY BE SUBSTITUTED.
 - JACKETED CABLE REQUIRES AT LEAST EIGHT GROUNDS WITHIN A MILE WITH 600 FEET MAXIMUM SEPARATION. INSTALL GROUND AT CABLE JOINT PER JOINT STANDARD.
 - TO OBTAIN NONADJUSTABLE COVERS CONTACT DISTRIBUTION STANDARDS.
 - FOR CUSTOMER OWNED INSTALLATIONS, CONTACT DISTRIBUTION STANDARDS FOR APPROVED SUPPLIERS.
- THE BOTTOM OF THE EXCAVATION SHOULD BE FIRM, UNDISTURBED, OR COMPACTED EARTH, LEVELED, WITHOUT ANY LARGE ROCKS OR OBSTRUCTIONS THAT WOULD PREVENT THE SPLICE BOX FROM SETTING LEVEL. THE SIZE OF THE HOLE AND WHETHER OR NOT SHORING IS NECESSARY WILL DEPEND ON SOIL CONDITIONS AND LOCAL CONSTRUCTION CODES. IT NEEDS TO BE LARGE ENOUGH FOR INSTALLATION OF A GROUND ROD (IN DISTURBED SOILS) AND TO ENABLE THE SPLICE BOX TO BE INSTALLED WITHOUT DISTURBING THE SIDEWALLS.
 - REPLACEMENT OF PAVING, CURBS, OR SIDEWALKS REMOVED BECAUSE OF SPLICE BOX CONSTRUCTION SHALL BE DONE IN ACCORDANCE WITH MUNICIPAL OR STATE REQUIREMENTS. SAND OR OTHER LOCALLY APPROVED MATERIAL SHALL BE USED AS BACKFILL EXCEPT WHEN THE EXCAVATED MATERIAL IS FINE AND DRY, CAN BE WELL COMPACTED, AND WILL NOT SETTLE AFTER PAVEMENT IS RESTORED. ALL BACKFILL AREAS SHALL BE THOROUGHLY COMPACTED AND FLOODED.
 - PLASTIC CONDUIT ENTRANCE BELLS ARE CAST IN WINDOW WALL AREA TO ACCEPT 5 INCH PLASTIC CONDUIT. ENTRANCE BELLS ARE DESIGNED WITH A REMOVABLE MEMBRANE TO BE REMOVED AT THE TIME OF CABLE INSTALLATION.
 - FOR OTHER CONDUIT SIZES SPECIFY BELL SIZE WHEN ORDERING SPLICE BOX. CONTACT DISTRIBUTION STANDARDS.
 - INSTALL ONLY CABLE BRACKETS AND SUPPORTS OF LIKE MATERIALS (ALL GALVANIZED OR ALL BRONZE) WITHIN THE SAME UNDERGROUND STRUCTURE.



DIMENSIONS	ADJUSTABLE COVER (16)		WEIGHT	
	a	b	COVER	BOX
C5279.B	85"	55"	TWO PIECE	400 LBS. 463 LBS.
C5279.C	104"	56"	THREE PIECE	520 LBS. 559 LBS.



COVER	WEIGHT	
	COVER	BOX
C5279.D	TWO PIECE	144 LBS. 460 LBS.



V3 Companies
 7325 Jane Avenue
 Woodridge, IL 60517
 630.724.9200 phone
 630.724.9202 fax
 www.v3co.com

DESIGNED	— CWH	REVISED	10/22/18	ADDENDUM #1
DRAWN	— LEH	REVISED	---	---
CHECKED	— DLM	REVISED	---	---
DATE	— 04-27-18	REVISED	---	---

JACKSON POND OVERFLOW PROJECT

ELECTRICAL DETAILS

F.A. RTE.	SECTION	COUNTY	TOTAL SHEETS	SHEET NO.
			DUPAGE	34
CONTRACT NO. _____				
ILLINOIS FED. AID PROJECT				

RETURN WITH BID

Bidder's Proposal for making Entire Improvements

Item No.	Items	Unit	Quantity	Unit Price	Total
72	DRAINAGE RESTRICTOR	EACH	1		
73	REMOVE AND REPLACE SIGN AND SUPPORTS	EACH	1		
74	DRAINAGE WEIR	EACH	1		
75	EXPLORATION TRENCH, SPECIAL	FOOT	20		
76	STORM SEWERS, DUCTILE IRON PIPE 30"	FOOT	38		
77	TRAFFIC CONTROL AND PROTECTION (SPECIAL)	L SUM	1		
78	PRECONSTRUCTION VIDEO RECORDING	L SUM	1		
79	CONCRETE REMOVAL (SPECIAL)	SQ YD	104		
80	STABILIZED CONSTRUCTION ENTRANCE	SQ YD	45		
81	CONSTRUCTION LAYOUT	L SUM	1		
82	FENCE REMOVAL	FOOT	699		
83	4' BY 4' BOX STRUCTURE	EACH	1		
84	BASEBALL INFIELD MIX	SQ YD	1,319		
85	BASES	LSUM	1		
86	BLEACHERS	EACH	1		
87	BOX PACKING CLAY	SQ YD	11		
88	COMED PRIMARY SPLICE BOX (INSTALL ONLY)	EACH	0		
89	CULVERT INLET PROTECTION	EACH	1		
90	DUGOUT REMOVAL	EACH	2		
91	ELECTRICAL CABINET, COMPLETE	EACH	1		
92	GRASS PAVERS	SQ FT	420		
93	GRATING FOR CONCRETE FLARED END SECTION 12"	EACH	1		
94	GRATING FOR CONCRETE FLARED END SECTION 30"	EACH	1		
95	LIMESTONE SCREENINGS	SQ YD	1,292		
96	NETTING	L SUM	1		

RETURN WITH BID

Bidder's Proposal for making Entire Improvements

Item No.	Items	Unit	Quantity	Unit Price	Total
97	PEDESTRIAN LIGHT UNIT, COMPLETE	EACH	2		
98	PEDESTRIAN LIGHT UNIT, FIXTURE ONLY	EACH	2		
99	PLASTIC FLARED END SECTION	EACH	4		
100	PLAYING FIELD SEEDING	SQ YD	9,893		
101	PLAYING FIELD SODDING	SQ YD	887		
102	RAILING	FOOT	116		
103	REMOVE AND RELOCATE BENCH	EACH	1		
104	TRANSFORMER PAD	EACH	1		
105	UNDERGROUND COMED PRIMARY CONDUIT, 4"	FOOT	1,150		
106	CONTINGENCY ALLOWANCE	DOLLAR	50,000		
107	WATER USAGE CREDIT	TGAL	1		
108	WATER USAGE DEDUCTION	TGAL	1		
109	GEOTEXTILE FABRIC BARRIER	SQ YD	18,070		

Total Base Bid:	
------------------------	--

3. Finish elevations and uniformity shall be verified by a registered land surveyor at the contractor's expense. The contractor must submit a copy of the survey to the Project Manager as outlined in the Submittals section.

Method of Measurement. This work will be measured for payment in place and the area computed in square yards.

Basis of Payment. Box Packing Clay shall be paid for at the contract unit price bid per square yard of BOX PACKING CLAY.

PAY ITEM #88 – COMED PRIMARY SPLICE BOX (INSTALL ONLY)

~~**Description.** This item shall consist of all coordination, materials, and labor required to install a splice box furnished by ComEd complete with earth preparation, aggregate base, and grounding per ComEd Standard C5279. The contractor shall coordinate the splice box locations and orientation with ComEd prior to start of construction.~~

~~**Materials.** Materials shall be in accordance with ComEd Specifications and as stated in ComEd Standard C5279 included on the electrical details. ComEd to furnish splice box. Contractor to furnish all other required materials for splice box installation.~~

~~**Method of Measurement.** This work will be measured for payment in place for each splice box installed.~~

~~**Basis of Payment.** This work will be paid for at the contract unit price each for COMED PRIMARY SPLICE BOX (INSTALL ONLY) which shall be payment in full for the work specified herein.~~

PAY ITEM #89 – CULVERT INLET PROTECTION

Description. This work shall consist of placing, maintaining, and removing culvert inlet protection at locations shown on the plans in accordance with Section 280 of the Standard Specifications. The CONTRACTOR will be responsible for cleaning and maintaining the culvert inlet protection until such time that they can be removed. At the direction of the RESIDENT ENGINEER the CONTRACTOR shall remove the culvert inlet protection and they shall become the property of the CONTRACTOR and be disposed of off-site.

Basis of Payment. This work will be measured for payment at the contract unit price per EACH for CULVERT INLET PROTECTION, which price shall include installing, maintaining, and the removal and disposal of all material.

PAY ITEM #109 – GEOTEXTILE FABRIC BARRIER

Description. This item shall consist of all material, coordination, and labor required to install geotextile fabric 12” beneath finished grade within the area shown on the plans.

Materials. The geotextile fabric shall be Geotex 801 by Propex (or approved equal), a nonwoven polypropelene meeting the following requirements:

PROPERTY	TEST METHOD	ENGLISH
Grab Tensile Strength	ASTM D-4632	205 lbs
Grab Elongation	ASTM D-4632	50%
CBR Puncture	ASTM D-6241	525 lbs
Trapezoidal Tear	ASTM D-4533	80 lbs
UV Resistance at 500 hrs	ASTM D-4355	70%
Apparent Opening Size (AOS)	ASTM D-4751	80 US Std. Sieve
Permittivity	ASTM D-4491	1.5 sec ⁻¹
Water Flow Rate	ASTM D-4491	110 gpm/ft ²

The geotextile fabric shall be installed per section 210.03 of the Standard Specifications.

The fabric shall be placed 12” below the finished grade beneath the topsoil layer where it is vegetated or beneath the infield or limestone screenings section where it is not vegetated.

Method of Measurement. This work will be measured for payment in place and the area computed in square yards.

Basis of Payment. This work will be paid for at the contract unit price square yards for GEOTEXTILE FABRIC BARRIER which shall be payment in full for the work specified herein.