

F.A.U. RTE.	SECTION	COUNTY	TOTAL SHEETS	SHEET NO.
-	N/A	DUPAGE	10	1
		ILLINOIS	CONTRACT NO.	

VILLAGE OF VILLA PARK, ILLINOIS

BIERMANN AVENUE COMBINED SEWER SEPARATION PROJECT

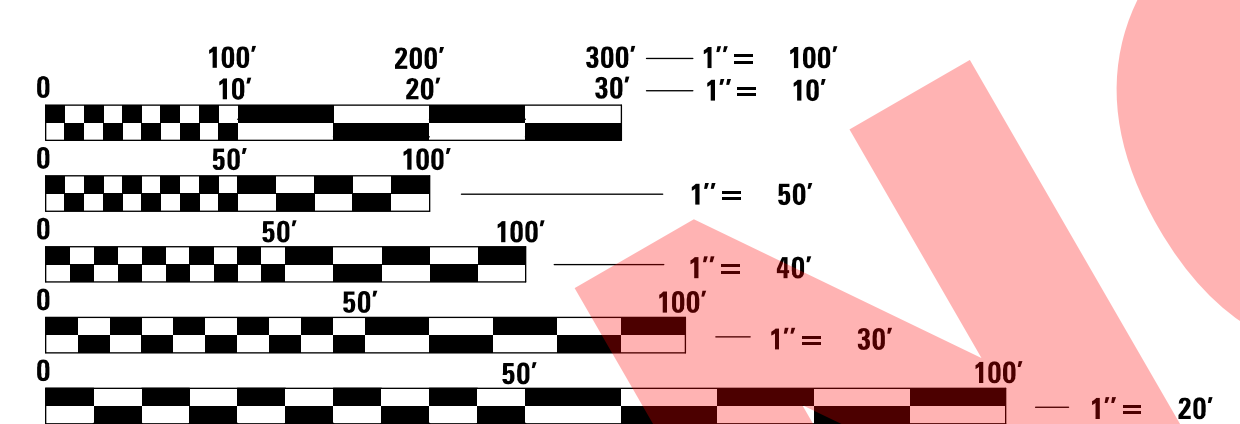
DUPAGE COUNTY, ILLINOIS

FOR INDEX OF SHEETS, SEE SHEET NO. 2

THE CONTRACTOR SHALL BE SOLELY RESPONSIBLE FOR JOB SITE SAFETY AS WELL AS SUPERVISION/DIRECTION AND MEANS/METHODS OF CONSTRUCTION

SCALES

- PLAN 1" = 20'
- PROFILE HORIZ. 1" = 20'
- PROFILE VERT. 1" = 5'



FULL SIZE PLANS HAVE BEEN PREPARED USING STANDARD ENGINEERING SCALES. REDUCED SIZED PLANS WILL NOT CONFORM TO STANDARD SCALES. IN MAKING MEASUREMENTS ON REDUCED PLANS, THE ABOVE SCALES MAY BE USED.

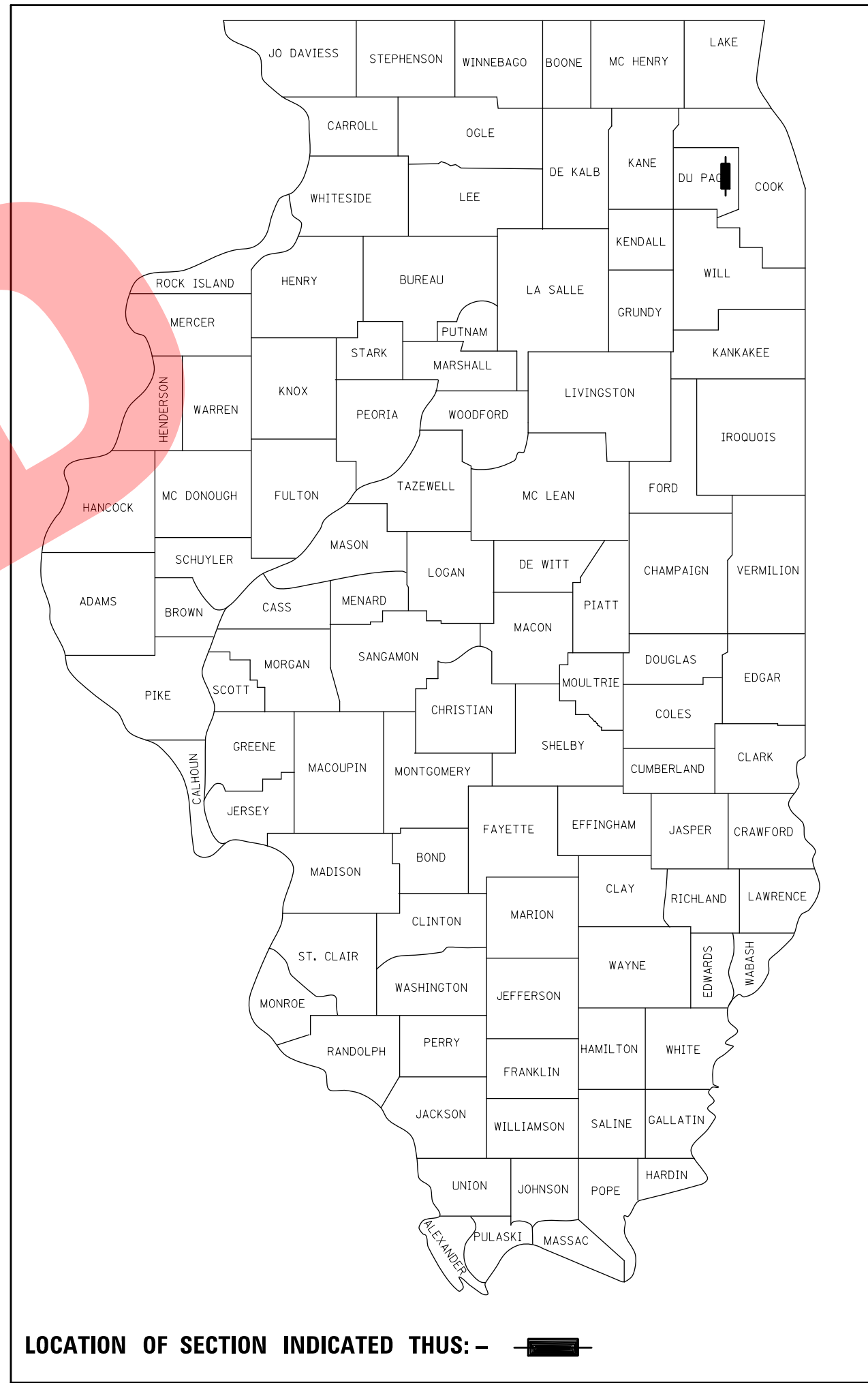
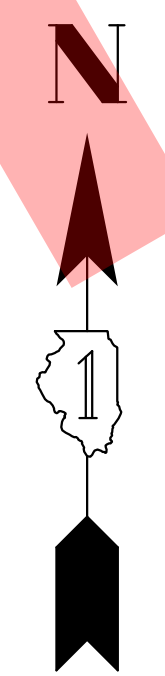
J.U.L.I.E. CALL JULIE 811 WITH THE FOLLOWING:
 COUNTY DUPAGE
 CITY-TOWNSHIP VILLA PARK
 48 HOURS BEFORE YOU DIG.
 EXCLUDING SAT., SUN., & HOLIDAYS



R 11E

— PROJECT LOCATION

GROSS LENGTH = 736 FT. = 0.14 MILES
 NET LENGTH = 736 FT. = 0.14 MILES



ANDREW M. PUFUNDT
 REGISTERED PROFESSIONAL ENGINEER OF ILLINOIS
 062-061729
 DATE 5/19/2017
 ENGINEER
 ANDREW M. PUFUNDT
 ILLINOIS REGISTRATION No. 062-061729
 EXPIRATION DATE: 11/30/17

CHRISTOPHER B. BURKE ENGINEERING, LTD.
 9575 W. Higgins Road, Suite 600
 Rosemont, Illinois 60018
 (847) 823-0500
 PROFESSIONAL DESIGN FIRM NO. 184-001175
 EXPIRATION DATE: 04/30/17

GENERAL NOTES

INDEX OF SHEETS

DESCRIPTION	SHEET NO.
TITLE SHEET	1
INDEX OF SHEETS, HIGHWAY STANDARDS, AND GENERAL NOTES	2
SUMMARY OF QUANTITIES	3
TYPICAL SECTIONS	4
ALIGNMENT, TIES, AND BENCHMARKS	5
EXISTING CONDITIONS AND REMOVAL PLAN	6
UTILITY PLAN AND PROFILE	7-8
CONSTRUCTION DETAILS	9-10

HIGHWAY STANDARDS

000001-06 - STANDARD SYMBOLS, ABBREVIATIONS AND PATTERNS
424001-09 - PERPENDICULAR CURB RAMPS FOR SIDEWALKS
442201-03 - CLASS C AND D PATCHES
602011-02 - CATCH BASIN TYPE C
602401-03 - MANHOLE TYPE A
602601-04 - PRECAST REINFORCED CONCRETE FLAT SLAB TOP (ONLY IF APPROVED IN FIELD BY ENGINEER)
602701-02 - MANHOLE STEPS
604001-04 - FRAME AND LIDS TYPE 1
604051-04 - FRAME AND GRATE TYPE 11
606001-06 - CONCRETE CURB TYPE B AND COMBINATION CONCRETE CURB AND GUTTER
701301-04 - LANE CLOSURE, 2L, 2W, SHORT TIME OPERATIONS
701501-06 - URBAN LANE CLOSURE, 2L, 2W, UNDIVIDED
701801-06 - SIDEWALK, CORNER OR CROSSWALK CLOSURE
701901-06 - TRAFFIC CONTROL DEVICES
780001-05 - TYPICAL PAVEMENT MARKINGS

SPECIFICATIONS, STANDARDS AND SPECIAL PROVISIONS

- ALL CONSTRUCTION SHALL BE DONE IN ACCORDANCE WITH THE "STANDARD SPECIFICATIONS FOR ROAD AND BRIDGE CONSTRUCTION", ADOPTED APRIL 1, 2016; THE "SUPPLEMENTAL SPECIFICATIONS AND RECURRING SPECIAL PROVISIONS", THE LATEST REVISION; THE LATEST EDITION OF THE "ILLINOIS MANUAL ON UNIFORM TRAFFIC CONTROL DEVICES FOR STREETS AND HIGHWAYS" (IMUTCD), "THE STANDARD SPECIFICATIONS FOR WATER AND SEWER MAIN CONSTRUCTION IN ILLINOIS" JUNE 2014 SEVENTH EDITION, THE "DETAILS" IN THE PLANS AND THE "SPECIAL PROVISIONS" INCLUDED IN THE CONTRACT DOCUMENTS.
- ANY REFERENCE TO STANDARDS THROUGHOUT THE PLANS OR SPECIAL PROVISIONS SHALL BE INTERPRETED AS THE LATEST IDOT HIGHWAY STANDARD.
- CODES OF THE IEPA TITLE 35, AND O.S.H.A. SHALL BE ADHERED TO FOR THE CONSTRUCTION OF THIS PROJECT. IT WILL BE THE CONTRACTOR'S RESPONSIBILITY TO ENSURE ADHERENCE TO THESE (NOT THE VILLAGE'S OR THE ENGINEER'S).
- ALL TRAFFIC CONTROL AND OTHER ADVISORY SIGNS NEEDED FOR CONSTRUCTION ARE TO BE FURNISHED BY THE CONTRACTOR IN ACCORDANCE WITH SECTION 700 OF THE STANDARD SPECIFICATIONS.
- ALL REQUIRED PERMITS FROM THE PROPER GOVERNING AGENCY SHALL BE OBTAINED FOR CONSTRUCTION ALONG OR ACROSS EXISTING STREETS OR HIGHWAYS. THE CONTRACTOR SHALL MAKE ARRANGEMENTS FOR THE PROPER BRACING, SHEETING, SHORING AND OTHER REQUIRED PROTECTION OF ALL ROADWAYS BEFORE CONSTRUCTION BEGINS. THE CONTRACTOR SHALL BE RESPONSIBLE FOR ANY DAMAGE TO THE STREETS OR ROADWAYS AND ASSOCIATED STRUCTURES AND SHALL MAKE REPAIRS AS NECESSARY TO THE SATISFACTION OF THE AGENCY, AT THE CONTRACTOR'S OWN EXPENSE. THE CONTRACTOR SHALL BE RESPONSIBLE FOR THE INSTALLATION AND MAINTENANCE OF ADEQUATE SIGNS AND WARNING DEVICES TO INFORM AND PROTECT THE PUBLIC.

UTILITIES

- THE CONTRACTOR SHALL BE RESPONSIBLE FOR CONTACTING THE OWNERS OF ALL EXISTING FACILITIES SO THAT THE UTILITIES AND THEIR APPURTENANCES MAY BE LOCATED AND ADJUSTED OR MOVED, IF NECESSARY, PRIOR TO THE START OF CONSTRUCTION OPERATIONS. THE CONTRACTOR SHALL COOPERATE WITH ALL UTILITY OWNERS AS PROVIDED FOR IN THE STANDARD SPECIFICATIONS.
- THE LOCATIONS OF EXISTING DRAINAGE STRUCTURES, STORM AND SANITARY SEWERS, WATER SERVICE LINES AND OTHER UTILITY LINES ARE APPROXIMATE, AND THE VILLAGE DOES NOT GUARANTEE THEIR ACCURACY. THEIR EXACT HORIZONTAL AND VERTICAL LOCATIONS ARE TO BE DETERMINED IN THE FIELD BY THE CONTRACTOR AT THE CONTRACTOR'S OWN EXPENSE.
- THE CONTRACTOR SHALL BE RESPONSIBLE FOR THE PROTECTION OF ALL UNDERGROUND OR SURFACE UTILITIES AND SEWER EVEN THOUGH THEY MAY NOT BE SHOWN ON THE PLANS. ANY SEWER OR UTILITY THAT IS DAMAGED DURING CONSTRUCTION SHALL BE REPAIRED OR REPLACED TO THE SATISFACTION OF THE ENGINEER OR VILLAGE. THIS WORK SHALL BE AT THE CONTRACTOR'S EXPENSE.
- BEFORE STARTING ANY EXCAVATING, THE CONTRACTOR SHALL CALL "J.U.L.I.E." AT 811 OR AT 800-892-0123 FOR FIELD LOCATIONS OF BURIED ELECTRIC, TELEPHONE, CABLE AND GAS FACILITIES AND THE VILLAGE OF VILLA PARK FOR FIELD LOCATIONS OF BURIED WATER, SANITARY AND STORM FACILITIES (2 WORKING DAYS ADVANCE NOTIFICATION IS REQUIRED).
- THE PUBLIC WORKS DEPARTMENT AT 630-834-8505 SHALL BE NOTIFIED 48 HOURS PRIOR TO CONSTRUCTION AND ALL TESTING.
- ALL UTILITY CONNECTIONS TO EXISTING LINES SHALL BE CONSTRUCTED IN ACCORDANCE WITH THE REGULATIONS AND TO THE SATISFACTION OF THE UTILITY OWNER.

STAKING

- THE CONTRACTOR SHALL PROTECT AND CAREFULLY PRESERVE ALL SECTION OR SUBSECTION MONUMENTS OR PROPERTY OR REFERENCE MARKERS UNTIL THE VILLAGE, THE VILLAGE'S AGENT OR AN AUTHORIZED SURVEYOR HAS WITNESSED OR OTHERWISE REFERENCED THEIR LOCATIONS.

WATER, STORM SEWER AND SANITARY SEWER

- WHENEVER DURING CONSTRUCTION OPERATIONS ANY LOOSE MATERIAL IS DEPOSITED IN THE FLOW LINE OF UTILITY STRUCTURES SUCH THAT THE NATURAL FLOW OF WATER IS OBSTRUCTED, IT SHALL BE REMOVED IMMEDIATELY. AT THE CONCLUSION OF CONSTRUCTION OPERATIONS, ALL UTILITY STRUCTURES SHALL BE FREE FROM DIRT AND DEBRIS. THE WORK SPECIFIED ABOVE WILL NOT BE PAID FOR SEPARATELY BUT SHALL BE INCLUDED IN THE COST OF THE CONTRACT.
- WHEN EXISTING DRAINAGE FACILITIES ARE DISTURBED, THE CONTRACTOR SHALL PROVIDE AND MAINTAIN TEMPORARY OUTLETS AND CONNECTIONS FOR ALL PRIVATE OR PUBLIC DRAINS, SEWERS OR CATCH BASINS. THE CONTRACTOR SHALL PROVIDE FACILITIES TO TAKE IN ALL STORM WATER WHICH WILL BE RECEIVED BY THESE DRAINS AND SEWERS AND DISCHARGE THE SAME. THE CONTRACTOR SHALL PROVIDE AND MAINTAIN AN EFFICIENT PUMPING PLANT, IF NECESSARY, AND A TEMPORARY OUTLET AND BE PREPARED AT ALL TIMES TO DISPOSE OF THE WATER RECEIVED FROM THESE TEMPORARY CONNECTIONS UNTIL SUCH TIME AS THE PERMANENT CONNECTIONS WITH SEWERS ARE BUILT AND IN SERVICE. THIS WORK WILL NOT BE PAID FOR SEPARATELY, BUT SHALL BE INCLUDED IN THE COST OF THE STORM SEWER.
- ANY EXISTING OR PROPOSED UTILITY DAMAGED BY THE CONTRACTOR DURING CONSTRUCTION SHALL BE REPLACED BY THE CONTRACTOR AT NO COST TO THE VILLAGE.
- THE COST OF CONNECTING EXISTING STORM SEWER TO THE PROPOSED DRAINAGE SYSTEM AND CONNECTING PROPOSED STORM SEWER TO EXISTING STRUCTURES SHALL BE CONSIDERED INCLUDED IN THE CONTRACT UNIT PRICE FOR STORM SEWERS. HOWEVER, THE NECESSARY PIPE WILL BE PAID FOR AT THE CONTRACT UNIT PRICE FOR "STORM SEWER" OF THE TYPE AND SIZE REQUIRED.
- THE CONTRACTOR SHALL CONFIRM ALL EXISTING STORM SEWER PIPE SIZES AND INVERTS PRIOR TO ORDERING STRUCTURES. ANY MODIFICATIONS OF STRUCTURES DUE TO THE FAILURE OF THE CONTRACTOR TO PERFORM THIS TASK SHALL BE AT THE CONTRACTOR'S EXPENSE AND MAY LEAD TO THE REJECTION OF THE STRUCTURE IN THE FIELD.

- WHEN CONNECTION TO AN EXISTING SEWER MAIN IS MADE BY MEANS OTHER THAN AN EXISTING WYE, TEE, OR AN EXISTING MANHOLE, THE FOLLOWING METHOD SHALL BE USED:
 - CIRCULAR SAW-CUT OF SEWER MAIN BY PROPER TOOLS ("SEWER-TAP" MACHINE OR SIMILAR) AND PROPER INSTALLATION OF HUB-WYE SADDLE OR HUB-TEE SADDLE.
- SEWER CONSTRUCTION: ALL WORK SHALL CONFORM TO THE PROVISIONS OF THE STANDARD SPECIFICATIONS EXCEPT AS SAME MAY BE MODIFIED BY THE FOLLOWING: ALL WATER FROM THE TRENCH AND PIPELINES WILL BE PUMPED OUT BY THE CONTRACTOR AND DISPOSED OF IN SUCH A MANNER THAT IT WILL NOT INTERFERE OR DAMAGE THE WORK OF THIS OR OTHER CONTRACTORS PUMPING SHALL BE CONTINUOUS (24 HOURS A DAY, SEVEN DAYS A WEEK) AS LONG AS SUFFICIENT WATER COLLECTS TO WARRANT THIS. STORM SEWERS IN THE AREA MAY BE USED TO DISPOSE OF THE WATER COLLECTED, IF APPROVED BY THE VILLAGE.
- ALL BEDDING AND BACKFILL MATERIAL SHALL BE OF VIRGIN MATERIAL.
- ANY PORTIONS OF STORM SEWER AND MISSION COUPLINGS NEEDED TO CONNECT (EXTEND) EXISTING STORM SEWER TO PROPOSED STORM SEWERS SHALL BE CONSIDERED INCLUDED IN THE COST OF THE SEWER. PROPOSED STORM SEWER SHALL BE STORM SEWER OF TYPE AND SIZE REQUIRED.

BACKFILL

- STORM SEWER SHALL BE BACKFILLED IN ACCORDANCE WITH THE VILLAGE OF VILLA PARK STANDARD DETAIL FOR PIPE INSTALLATION.
- ALL TRENCH BACKFILL QUANTITIES FOR STORM SEWER HAVE BEEN COMPUTED AND SHALL BE PAID FOR IN ACCORDANCE WITH THE VILLAGE OF VILLA PARK STANDARD FOR PIPE INSTALLATION. TRENCH WITH SHALL BE IN ACCORDANCE WITH ARTICLE 550.04 OF THE STANDARD SPECIFICATIONS.
- ALL SANITARY SEWERS, WATER MAINS AND STORM SEWERS MUST BE PLACED ON PROPERLY COMPACTED BEDDING. BEDDING MATERIAL SHALL BE PLACED A MINIMUM OF 4 INCHES THICK UNDER THE BARREL OF THE PIPE AND SHALL BE EXTENDED 12" OVER THE TOP OF PIPE. BEDDING MATERIAL SHALL BE CRUSHED GRAVEL OR STONE MEETING GRADATION CA-7 OR CA-11. BEDDING SHALL BE INCLUDED IN THE COST OF THE PIPE.
- TRENCH BACKFILL MATERIAL (CA-6 CRUSHED STONE) SHALL BE PLACED FROM 12" OVER THE TOP OF THE PIPE AND COMPACTED TO 95% OF STANDARD MAXIMUM DENSITY (A.S.T.M. D-698) OVER ALL UNDERGROUND UTILITIES WHICH ARE CONSTRUCTED UNDER, OR WITHIN 2 FEET OF ANY PROPOSED OR EXISTING PAVEMENT, PARKING LOTS, OR SIDEWALKS. TRENCH BACKFILL SHALL BE MECHANICALLY COMPACTED IN 12" MAXIMUM LIFTS.

MISCELLANEOUS

- DIMENSIONS: IT SHALL BE THE CONTRACTOR'S RESPONSIBILITY TO VERIFY ALL DIMENSIONS AND CONDITIONS EXISTING IN THE FIELD PRIOR TO ORDERING MATERIALS AND BEGINNING CONSTRUCTION. CONTRACTOR SHALL NOTIFY THE PROJECT ENGINEER OF ANY DISCREPANCIES IMMEDIATELY.
- BARRICADES: THE CONTRACTOR SHALL PROVIDE AND INSTALL TWO (2) WEIGHTED SAND BAGS ON EACH TYPE I OR TYPE II BARRICADE USED (ONE (1) WEIGHTED SAND BAG ACROSS EACH BOTTOM RAIL).

- RELOCATING EXISTING SIGNS: EXISTING SIGNS, EXCLUDING STOP SIGNS, WHICH ARE IN CONFLICT WITH PROPOSED IMPROVEMENTS SHALL BE REMOVED AND REINSTALLED UPON COMPLETION OF CONFLICTING IMPROVEMENTS IN ACCORDANCE WITH THE ILLINOIS DEPARTMENT OF TRANSPORTATION "MANUAL OF UNIFORM TRAFFIC CONTROL DEVICES" AND THE "STANDARD SPECIFICATIONS FOR TRAFFIC CONTROL ITEMS". ALL STOP SIGNS IN CONFLICT WITH PROPOSED IMPROVEMENTS SHALL BE IMMEDIATELY RELOCATED UNTIL COMPLETION OF CONFLICTING IMPROVEMENTS. UPON COMPLETION OF CONFLICTING IMPROVEMENTS, STOP SIGNS SHALL BE REINSTALLED AT THE PROPER LOCATION. STOP SIGNS SHALL BE VISIBLE TO MOTORISTS AT ALL TIMES. THIS WORK SHALL BE INCLUDED IN THE COST OF THE TRAFFIC CONTROL AND PROTECTION.
- PAY ITEMS IN THE SUMMARY OF QUANTITIES HAVE BEEN ESTIMATED. IF, IN THE ENGINEER'S OPINION, THE WORK IS NOT REQUIRED, THE ITEM WILL BE DEDUCTED FROM THE CONTRACT AND NO ADDITIONAL COMPENSATION WILL BE ALLOWED.
- CONTRACTOR SHALL NOT PLACE SOD UNTIL THE TEMPERATURE IS 80° OR LESS AND THE FORECAST FOR THE NEXT 7 DAYS SHOWS TEMPERATURES OF 80° OR LESS. IF ALL OTHER PAY ITEMS ARE COMPLETED, THE CONTRACTOR WILL NOT BE CHARGED WORKING DAYS FOR DELAYS IN PARKWAY RESTORATION DUE TO TEMPERATURE.
- THE SAFE AND ORDERLY PASSAGE OF TRAFFIC AND PEDESTRIANS SHALL BE PROVIDED WHERE OPERATIONS ABUT PUBLIC THOROUGHFARES AND ADJACENT PROPERTY.
- NO BURNING OR INCINERATION OF RUBBISH WILL BE PERMITTED ON SITE.
- NO CONSTRUCTION ACTIVITY SHALL BEGIN UNTIL ALL PROPER SIGNS AND BARRICADES HAVE BEEN INSTALLED.
- ALL REMOVAL OR EXCAVATION ITEMS BEING DISPOSED OF AT AN UNCONTAMINATED SOIL FILL OPERATION OR CLEAN CONSTRUCTION AND DEMOLITION DEBRIS (CCDD) FILL SITE SHALL MEET THE REQUIREMENTS OF PUBLIC ACT 96-1416. ALL COSTS ASSOCIATED WITH MEETING THESE REQUIREMENTS SHALL BE INCLUDED IN THE UNIT PRICE COST FOR THE ASSOCIATED REMOVAL OR EXCAVATION ITEMS IN THE CONTRACT. THESE COSTS SHALL INCLUDE BUT ARE NOT LIMITED TO ALL REQUIRED TESTING, LAB ANALYSIS, CERTIFICATION BY A LICENSED PROFESSIONAL ENGINEER, AND STATE AND LOCAL TIPPING FEES. A COPY OF IEPA LPC 662 FORM AND LETTER OF ACCEPTANCE HAVE BEEN INCLUDED IN CONTRACT DOCUMENTS.
- PRECONSTRUCTION MEETING WILL BE HELD AT LEAST 7 DAYS PRIOR TO START OF CONSTRUCTION.
- ALL PERMITS AND LICENSES MUST BE OBTAINED PRIOR TO START OF CONSTRUCTION.
- RESIDENTS SHALL HAVE ACCESS TO THE ROAD AND ALL DRIVEWAYS AT THE END OF EACH WORKING DAY. ALL TRENCHES SHALL BE BACKFILLED AT THE END OF EACH WORKING DAY.
- NO STOCKPILES OF MATERIAL WILL BE ALLOWED OVERNIGHT.

UTILITY COMPANY	AT&T (DISTRIBUTION)	COMCAST	COMED	DUPAGE WATER COMMISSION	NICOR GAS
CONSTRUCTION CONTACT PERSON	Steve Larson	Martha Gieras	Eric Jostes	Michael Schweizer	Bruce Koppang
Phone #	(630) 573-5450	(224) 229-5862	(630) 437-2927	(630) 834-0100	(630) 388-3046
FAX					
ADDRESS	AT&T (DISTRIBUTION)	COMCAST	COMED	DUPAGE WATER COMMISSION	NICOR GAS
	1000 Commerce Drive, Floor 1	688 Industrial Drive	3 Lincoln Center	600 E. Butterfield Road	1844 Ferry Road
	Oak Brook, IL 60523	Elmhurst, IL 60126	Oak Brook Terrace, IL 60181	Elmhurst, IL 60126	Naperville, IL 60563
FACILITIES IN / NEAR PROJECT	YES	YES	YES	NO	YES
COMMENTS / STATUS	AT&T HAS AERIAL FACILITIES IN REAR YARD EASEMENTS. NO CONFLICTS ARE ANTICIPATED.	COMCAST HAS AERIAL FACILITIES IN REAR YARD EASEMENTS. NO CONFLICTS ARE ANTICIPATED.	TWO COMED LIGHT POLES IN THE EAST PARKWAY ARE IN VICINITY OF PROPOSED IMPROVEMENTS. LIGHT POLES SHALL BE BRACED AND PROTECTED AS NECESSARY.		2" GAS LINE LOCATED IN EAST PARKWAY. PROPOSED STORM SEWER EXPECTED TO CROSS UNDER GAS LINE AT DIVISION STREET.

DSGN.	AJS	TITLE: BIERMANN AVENUE COMBINED SEWER SEPARATION PROJECT INDEX OF SHEETS, HIGHWAY STANDARDS, AND GENERAL NOTES	PROJ. NO. 140092.00005
DWN.	AJS		DATE: 5/22/2017
CHKD.	AMP	SHEET 2 OF 10	DRAWING NO.
SCALE:	20'		2
PLOT DATE:	5/22/2017		
CAD USER:	aschaefer		
NO.	DATE	NATURE OF REVISION	CHKD.
FILE NAME	N:\VILLAPARK\140092.00005\CIVIL\NOT_140092_05_01.SHT		

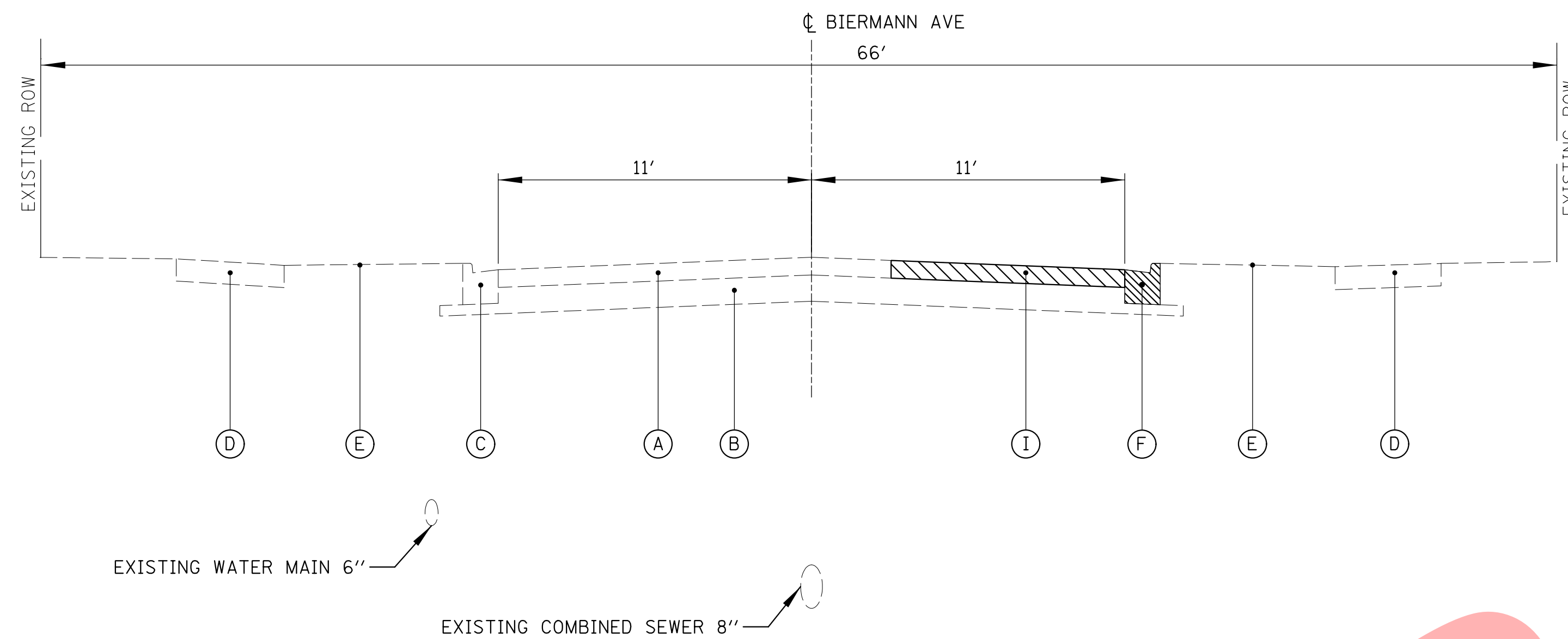
SUMMARY OF QUANTITIES

SP	ITEM NO.	ITEM	UNIT	QUANTITY
#	1	TREE TRUNK PROTECTION	EACH	14
#	2	TREE ROOT PRUNING	EACH	14
#	3	TREE PRUNING	EACH	14
#	4	SANITARY MANHOLE, TYPE A, 4'-DIAMETER, TYPE 1 FRAME, CLOSED LID	EACH	2
	5	SUPPLEMENTAL WATERING	UNIT	40
#	6	TRENCH BACKFILL	CU YD	800
#	7	SODDING	SQ YD	1127
#	8	INLET FILTERS	EACH	9
#	9	PORTLAND CEMENT CONCRETE DRIVEWAY PAVEMENT, 6 INCH	SQ YD	107
#	10	PORTLAND CEMENT CONCRETE SIDEWALK 5 INCH	SQ FT	3500
#	11	DETECTABLE WARNINGS	SQ FT	130
#	12	DRIVEWAY PAVEMENT REMOVAL	SQ YD	234
#	13	COMBINATION CURB AND GUTTER REMOVAL	FOOT	1123
#	14	SIDEWALK REMOVAL	SQ FT	3500
#	15	STORM SEWERS, CLASS A (RCP), 12"	FOOT	58
#	16	STORM SEWERS, CLASS A (RCP), 18"	FOOT	278
#	17	STORM SEWERS, CLASS A (RCP), 24"	FOOT	400
	18	STORM SEWER REMOVAL 8"	FOOT	170
#	19	ADJUSTING WATER MAIN 6"	FOOT	35
#	20	ADJUSTING SANITARY SEWERS, 8-INCH DIAMETER OR LESS	FOOT	410
#	21	ADJUSTING SANITARY SEWERS, 8-INCH DIAMETER OR LESS - DUCTILE IRON	FOOT	410
#	22	CATCH BASINS, TYPE A, 4'-DIAMETER, TYPE 11 FRAME AND GRATE	EACH	7
#	23	CATCH BASINS, TYPE C, TYPE 11 FRAME AND GRATE	EACH	2
#	24	MANHOLES, TYPE A, 4'-DIAMETER, TYPE 1 FRAME, CLOSED LID	EACH	4
	25	MANHOLES TO BE ADJUSTED	EACH	3
	26	FRAMES AND LIDS, TYPE 1, CLOSED LID	EACH	2
#	27	COMBINATION CONCRETE CURB AND GUTTER, TYPE B-4.12	FOOT	1123
	28	THERMOPLASTIC PAVEMENT MARKING - LINE 24"	FOOT	33
#	29	EXPLORATION TRENCH, SPECIAL	FOOT	72
#	30	WATER SERVICE CONNECTION (SHORT), 1"	EACH	4
#	31	WATER SERVICE CONNECTION (LONG), 1"	EACH	4
#	32	ADJUSTING WATER SERVICE LINES	EACH	12
#	33	TRAFFIC CONTROL AND PROTECTION, (SPECIAL)	LSUM	1
#	34	HOT-MIX ASPHALT DRIVEWAY PAVEMENT, 4"	SQ YD	127
#	35	CONSTRUCTION LAYOUT	L SUM	1
#	36	DRAINAGE STRUCTURE TO BE REMOVED	EACH	9
#	37	STORM SEWERS (WATER MAIN REQUIREMENTS) 12 INCH	FOOT	56
#	38	STORM SEWER (WATER MAIN REQUIREMENTS) 24 INCH	FOOT	42
#	39	AGGREGATE FOR TEMPORARY ACCESS	EACH	18
#	40	CLASS D PATCHES, 2 1/2"	SQ YD	1447
#	41	SANITARY SEWER SERVICE COMBINATION CLEANOUT CHECK VALVE	EACH	6
#	42	PRE-CONSTRUCTION VIDEO RECORDING	L SUM	1
#	43	WATER USAGE DEDUCTION	TGAL	100
#	44	WATER USAGE CREDIT	TGAL	100
#	45	CONTINGENCY ALLOWANCE	DOLLARS	25000
#	46	STORM SEWERS, CLASS B (PVC), 6"	FOOT	50
#	47	SANITARY SERVICE CONNECTION	EACH	6
#	48	SANITARY SERVICE REPLACEMENT	FOOT	200

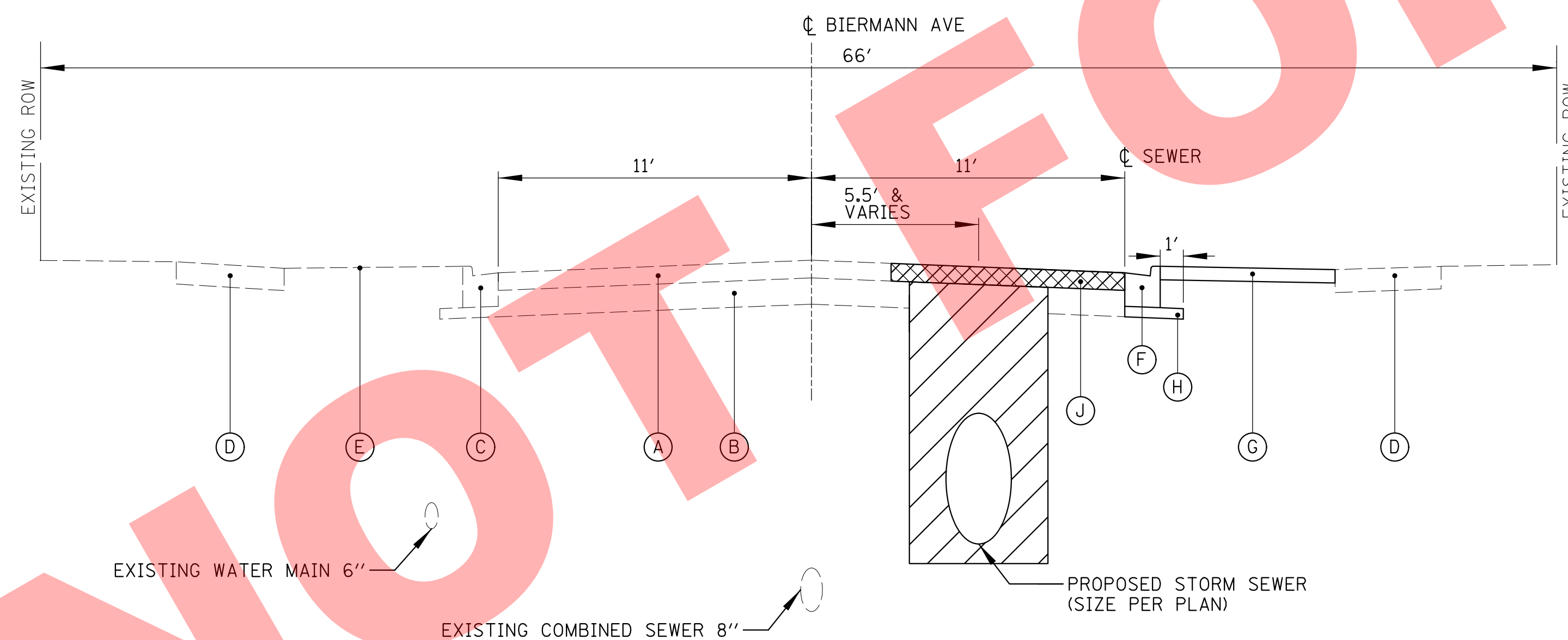
INDICATES SPECIAL PROVISION

NO BID

NO.	DATE	NATURE OF REVISION	CHKD.	MODEL:
				Default



EXISTING TYPICAL SECTION



PROPOSED TYPICAL SECTION

HOT-MIX ASPHALT MIXTURE REQUIREMENTS	
MIXTURE ITEM	AIR VOIDS @ Ndes
DRIVEWAYS	
HOT-MIX ASPHALT SURFACE COURSE, MIX "D", N50 (IL-9.5 MM), 4" (2 LIFTS)	4% @ 50 GYR
PATCHING	
CLASS D PATCHES, 2 1/2" (HMA BINDER IL-19 MM)	4% @ 70 GYR
NOTE: SAW CUT PATCHES PRIOR TO REMOVAL	

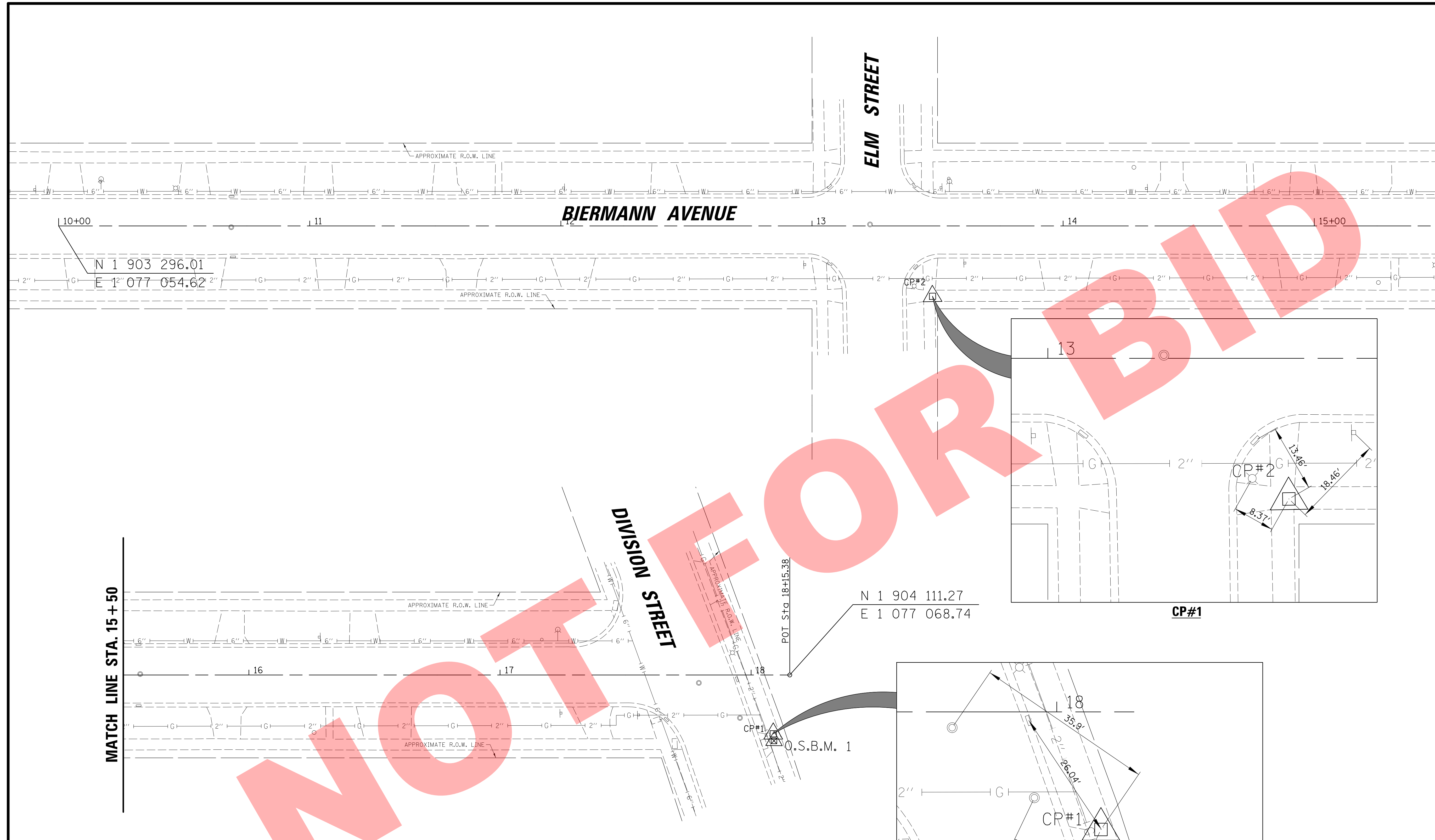
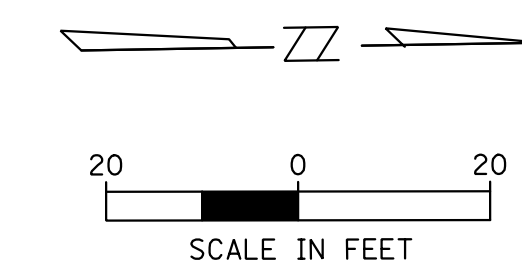
- NOTES:
- THE UNIT WEIGHT USED TO CALCULATE ALL HMA SURFACE MIXTURE QUANTITIES IS 112 LBS/SQ YD/IN.
 - THE "AC TYPE" FOR POLYMERIZED HMA MIXES SHALL BE "SBS/SBR PG 76-22" AND FOR NON-POLYMERIZED HMA THE "AC TYPE" SHALL BE "PG 64-22" UNLESS MODIFIED BY DISTRICT ONE SPECIAL PROVISIONS. FOR "PERCENT OF RAP AND RAS" SEE DISTRICT ONE SPECIAL PROVISIONS.

- NOTES:
- PRIOR TO PLACING CLASS D PATCHES, CONTRACTOR SHALL SAWCUT A CLEAN EDGE TO PAVE AGAINST. THIS WORK SHALL BE INCLUDED IN COST OF CLASS D PATCH.

LEGEND:

- CLASS D PATCHES, SPECIAL, 2 INCH
- TRENCH BEDDING AND BACKFILL
- PAVEMENT REMOVAL (INCLUDED IN COST OF CLASS D PATCH)
- (A) EXISTING HMA PAVEMENT (SEE SOIL BORINGS FOR THICKNESS)
- (B) EXISTING PCC OR STONE SUBBASE (SEE SOIL BORINGS FOR THICKNESS)
- (C) EXISTING CONCRETE CURB AND GUTTER TO REMAIN UNLESS OTHERWISE AUTHORIZED BY THE ENGINEER
- (D) EXISTING CONCRETE SIDEWALK OR SIDEWALK REPLACEMENT (AS DIRECTED BY ENGINEER)
- (E) EXISTING TOPSOIL AND GROUND COVER
- (F) CONCRETE CURB AND GUTTER REMOVAL AND REPLACEMENT, TYPE B-4.12
- (G) SODDING
- (H) SUB-BASE GRANULAR MATERIAL (CA-6), 4" (INCLUDED IN COST OF PROPOSED CURB & GUTTER)
- (I) PAVEMENT REMOVAL (INCLUDED IN COST OF CLASS D PATCH)
- (J) CLASS D PATCHES, 2 1/2"

NO.	DATE	NATURE OF REVISION	CHKD.	MODEL:
				Default
FILE NAME	N:\VILLAPARK\140092.00005\CIVIL\TYP_140092_05_01.SHT			

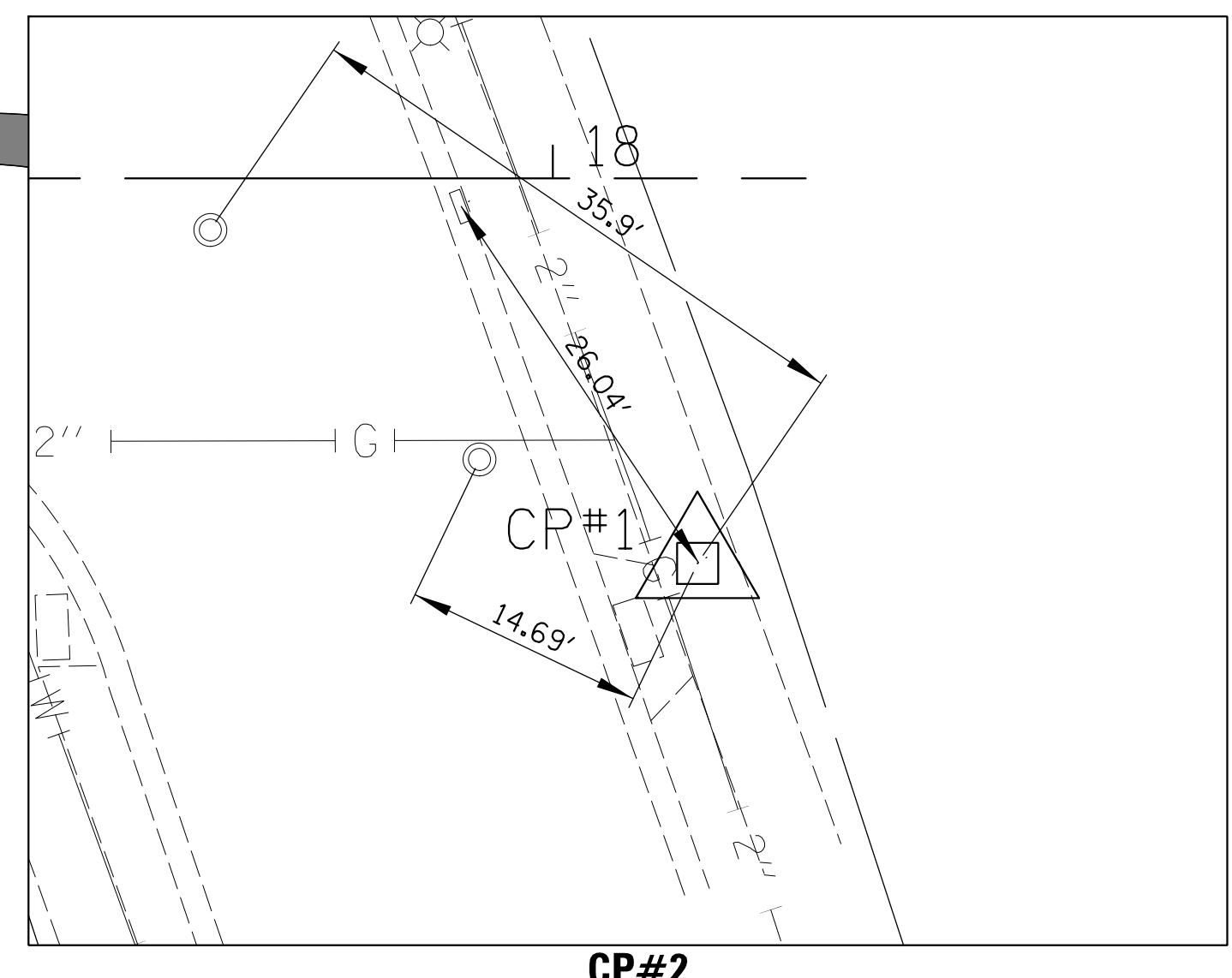
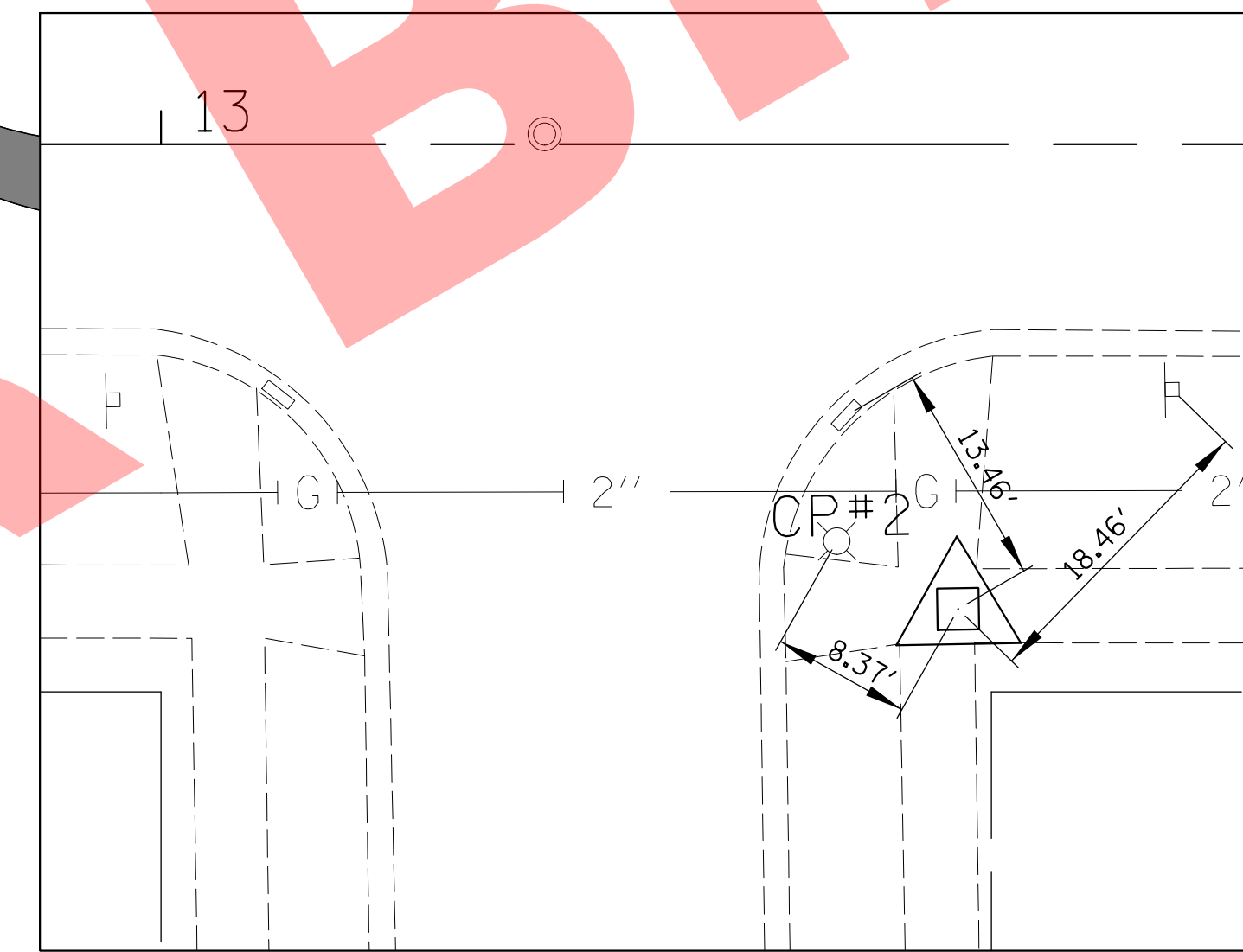


MATCH LINE STA. 15+50

MATCH LINE STA. 15+50

HORIZONTAL CONTROL POINTS					
POINT NO.	NORTHING (Y)	EASTING (X)	DESCRIPTION	STATION	OFFSET
1	1 904 104.29	1 077 092.03	CP-XCUT	18+08.81	23.41' RT
2	1 903 643.47	1 077 088.64	CP-XCUT	13+48.00	28.00' RT

ELEVATION BENCHMARKS DATUM: NAVD1988 (GPS OBSERVED)		
NO.	DESCRIPTION	ELEV.
YK09003	DUPAGE COUNTY 2006 GEODETIC SURVEY MONUMENT	707.14
OSBM 1	"X" CUT IN CONC SIDEWALK AT NORTH EAST "CORNER" OF DIVISION STREET AT BIERMANN AV. TEE INTERSECTION, JUST NORTH OF A. D. A. DETECTABLE WARNING ON SIDEWALK.	708.56



CHRISTOPHER B. BURKE ENGINEERING, LTD.
 9575 W. Higgins Road, Suite 600
 Rosemont, Illinois 60018
 (847) 823-0500

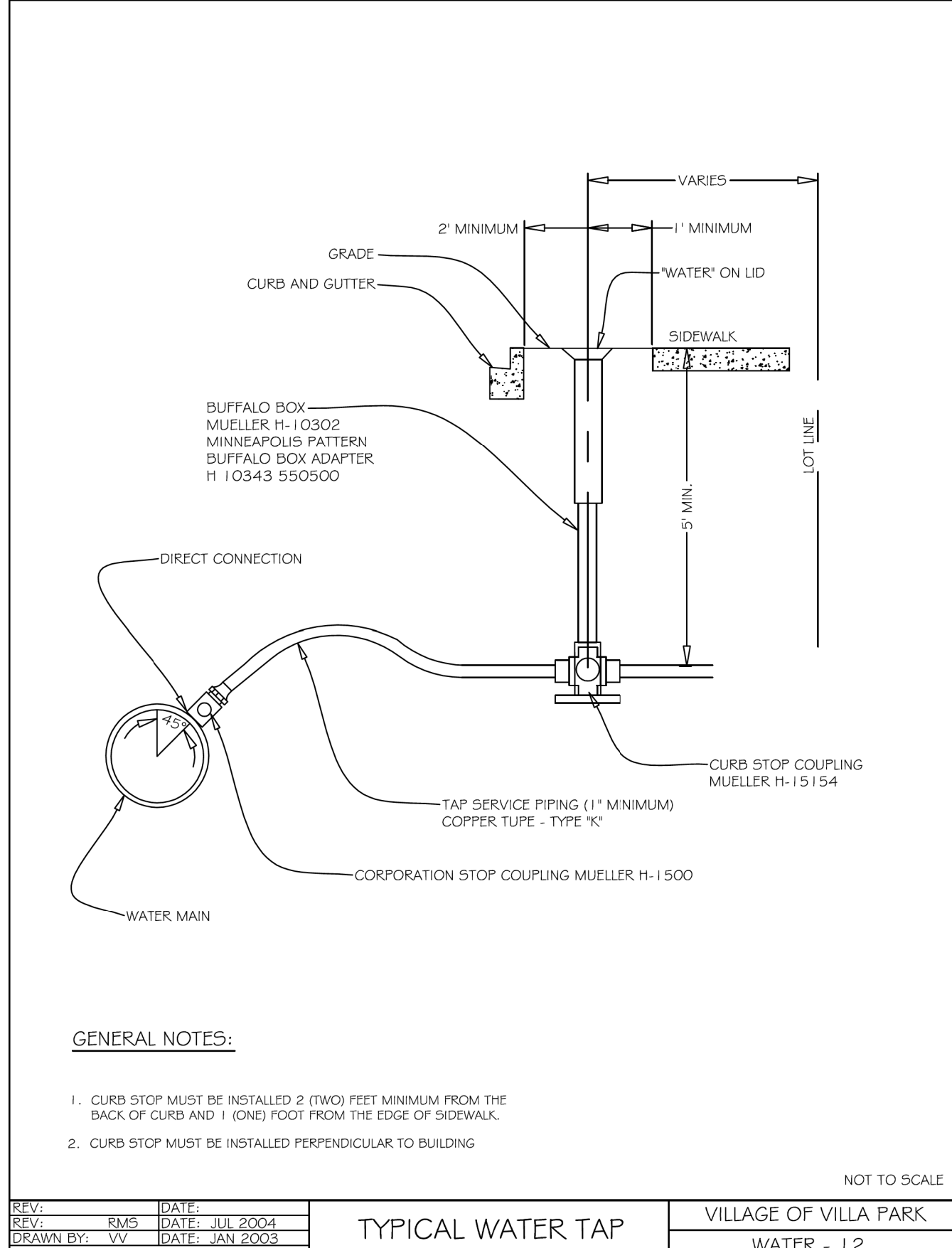
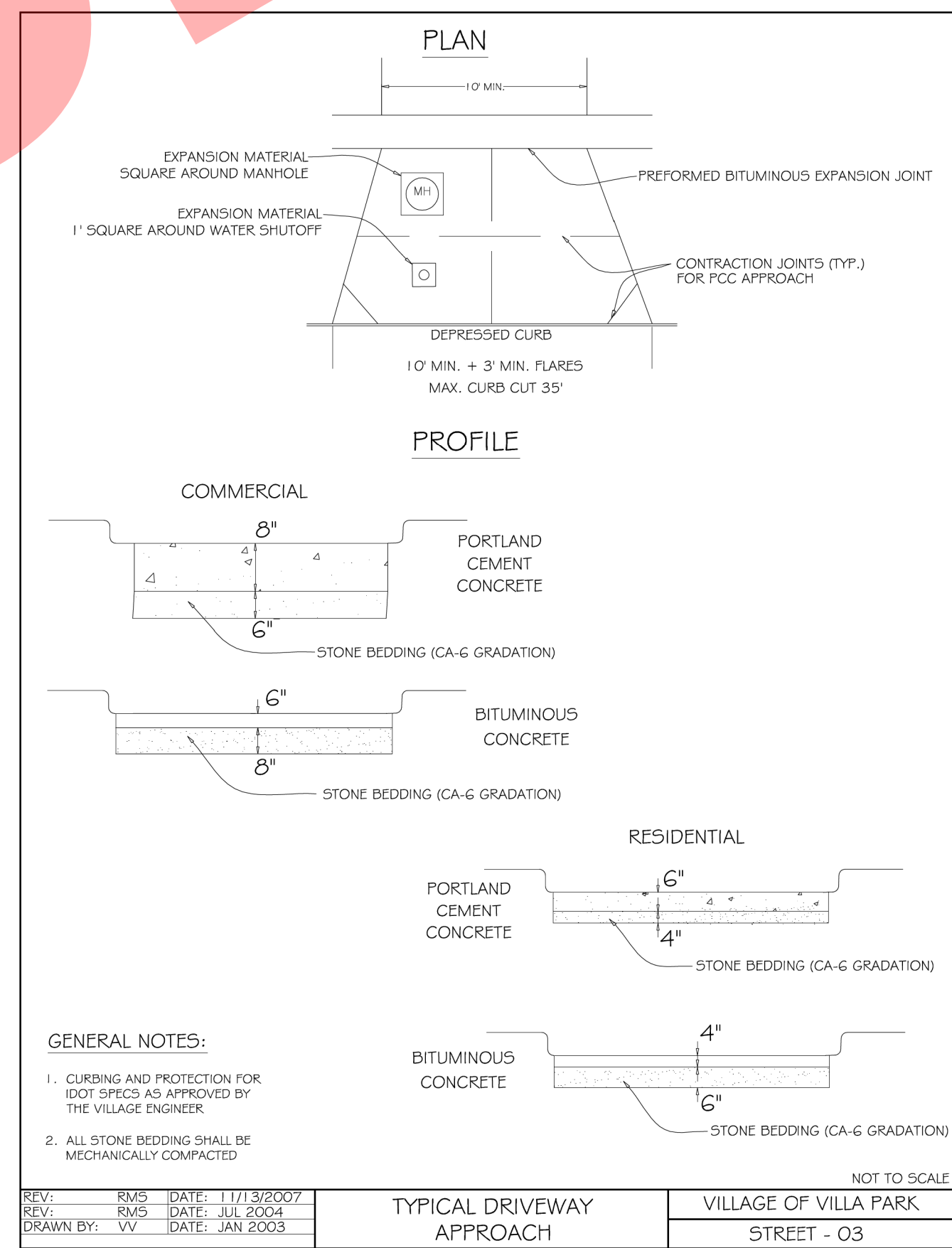
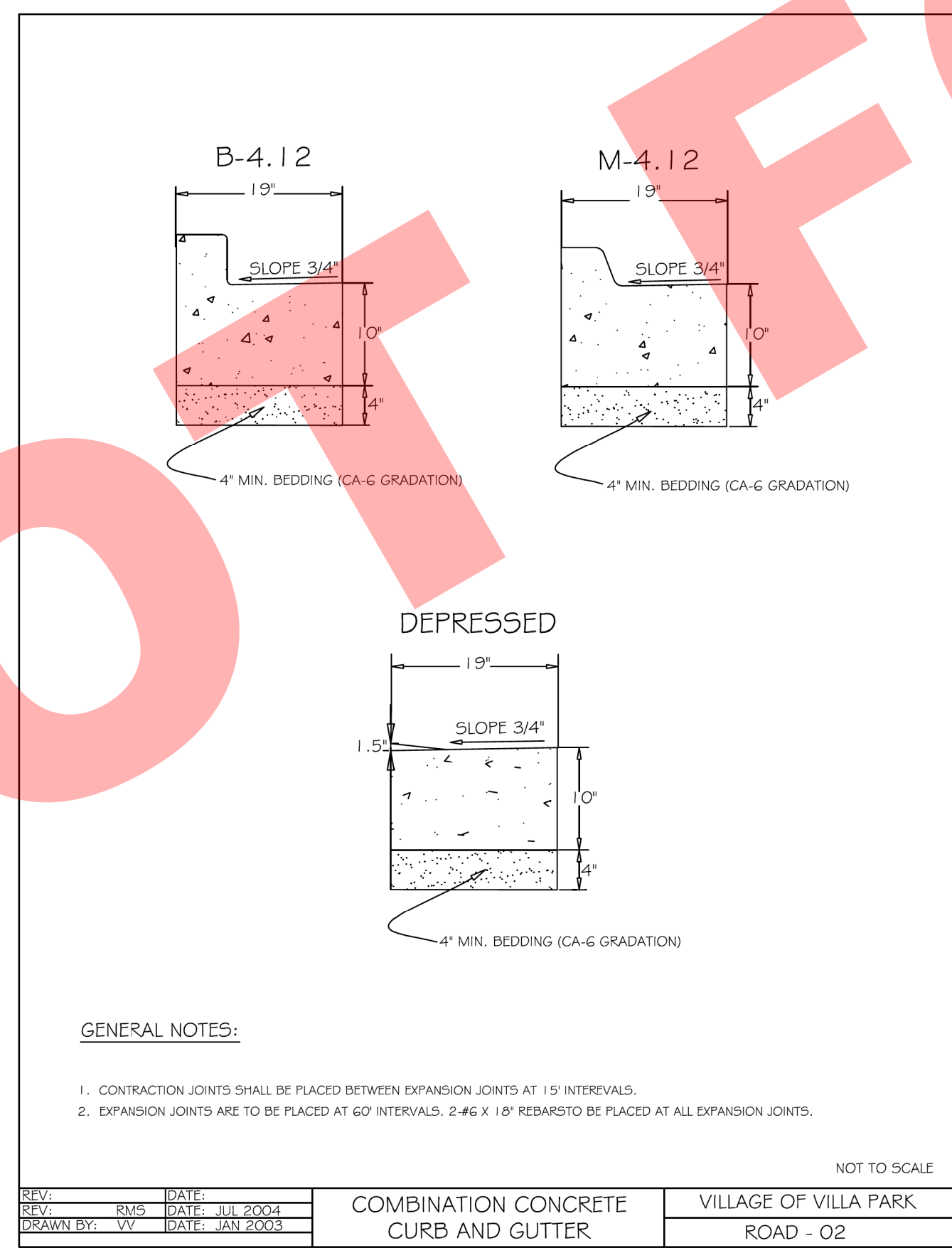
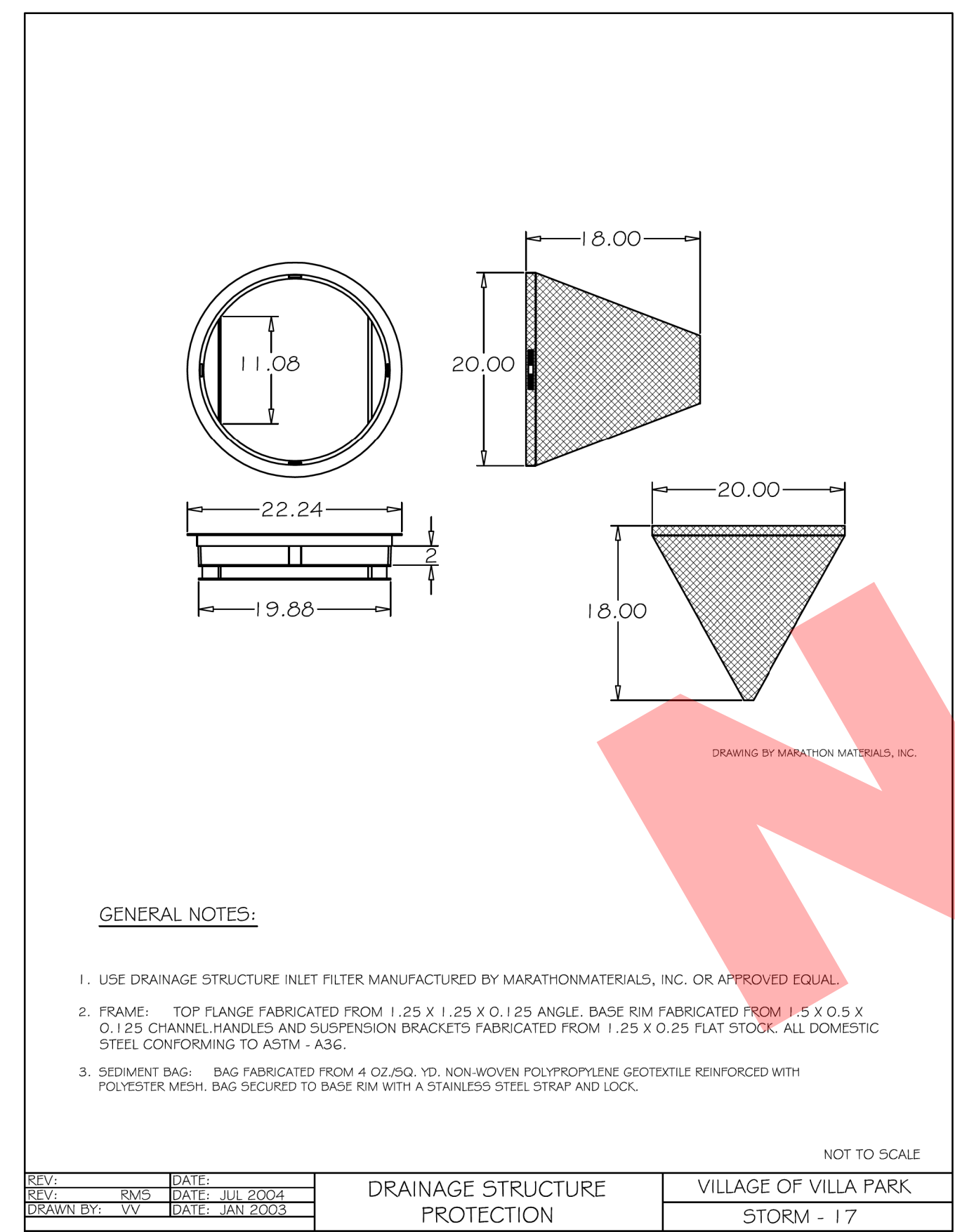
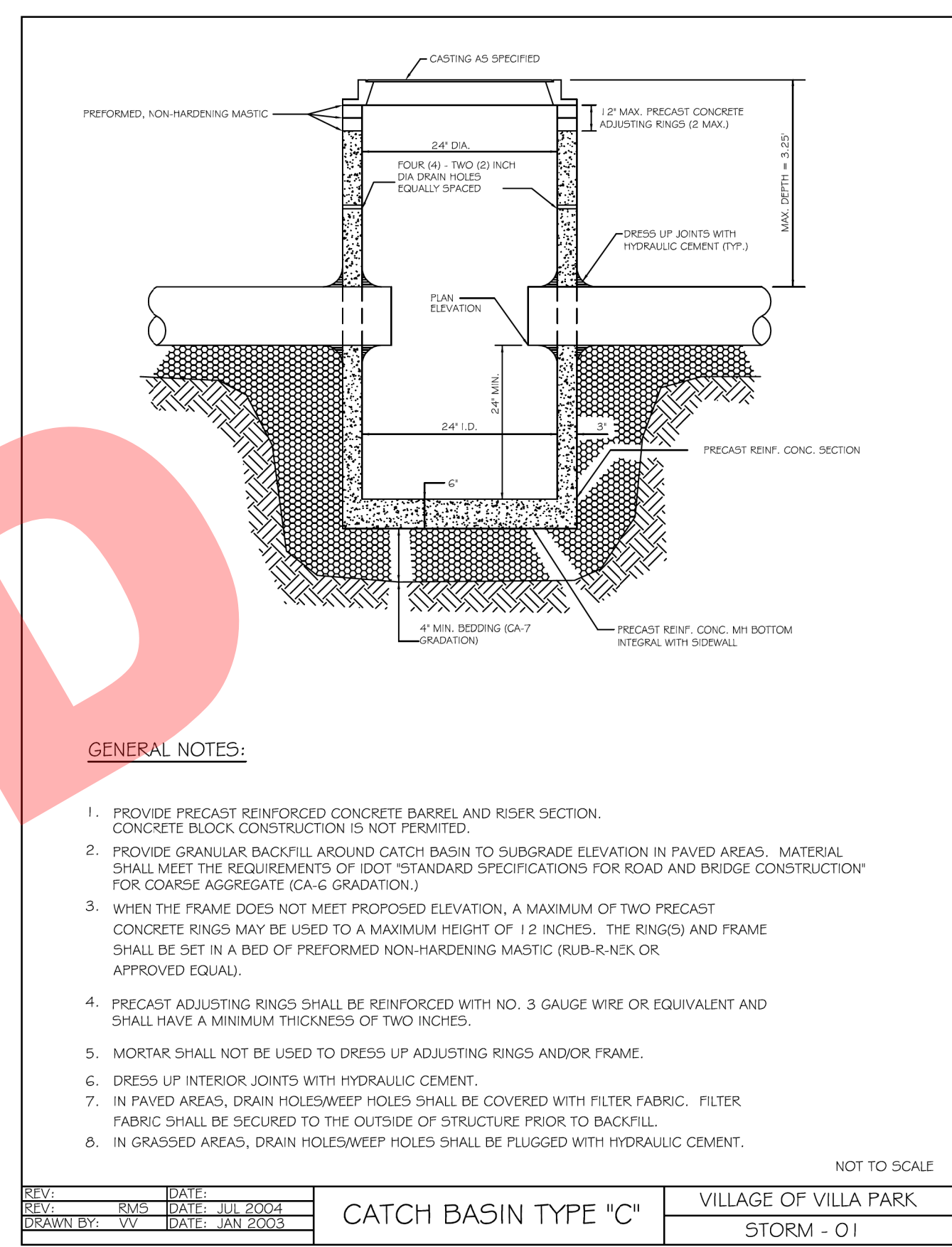
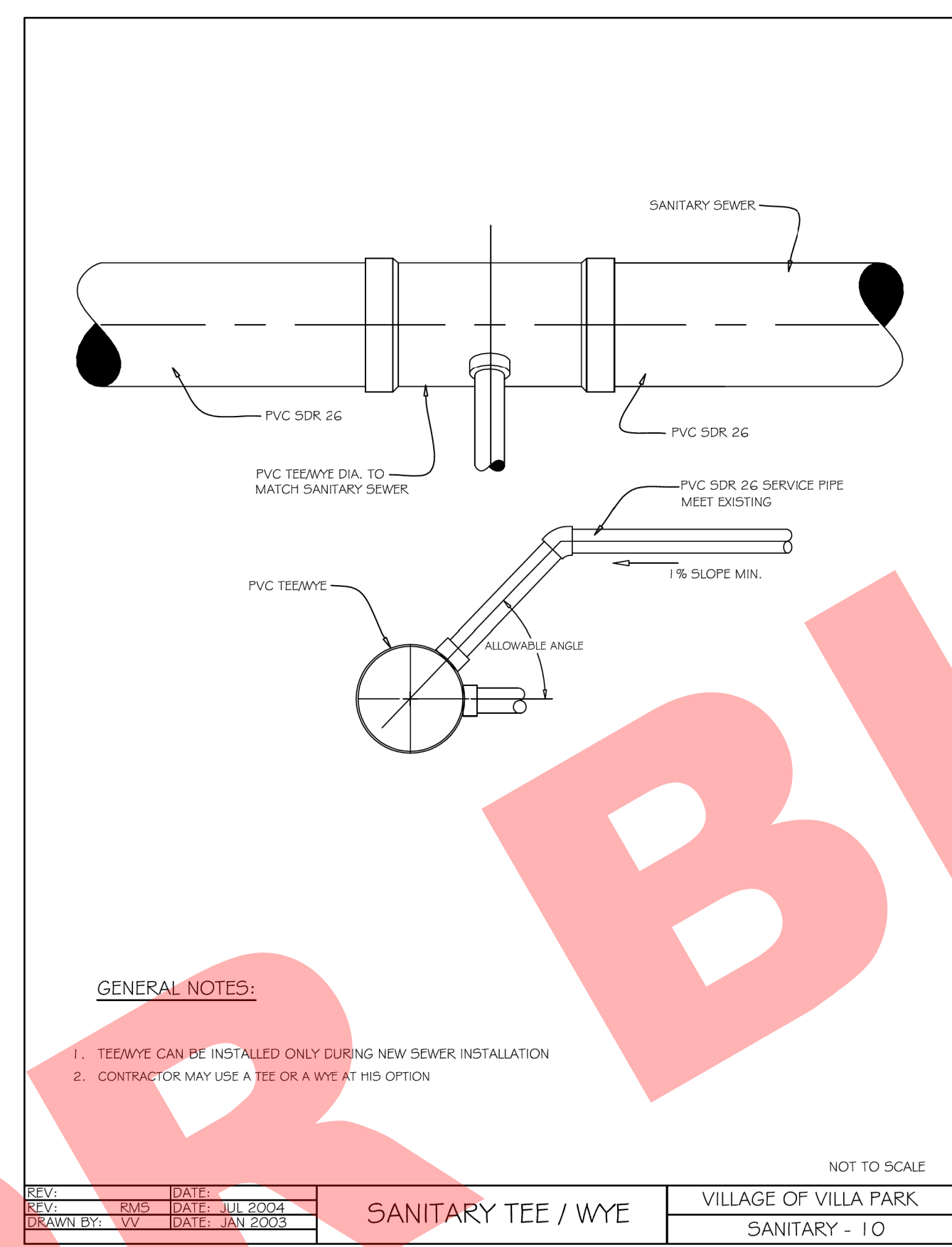
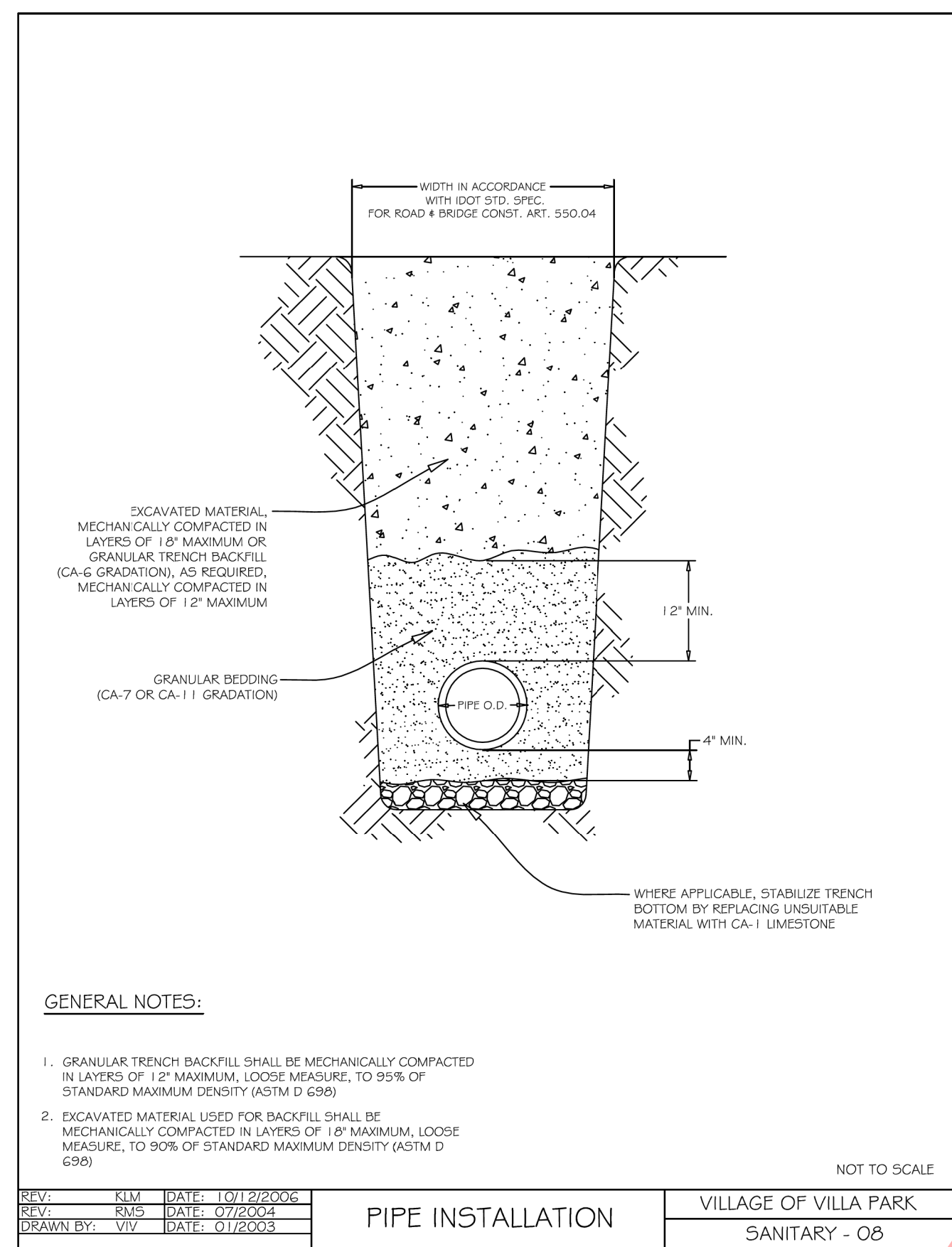
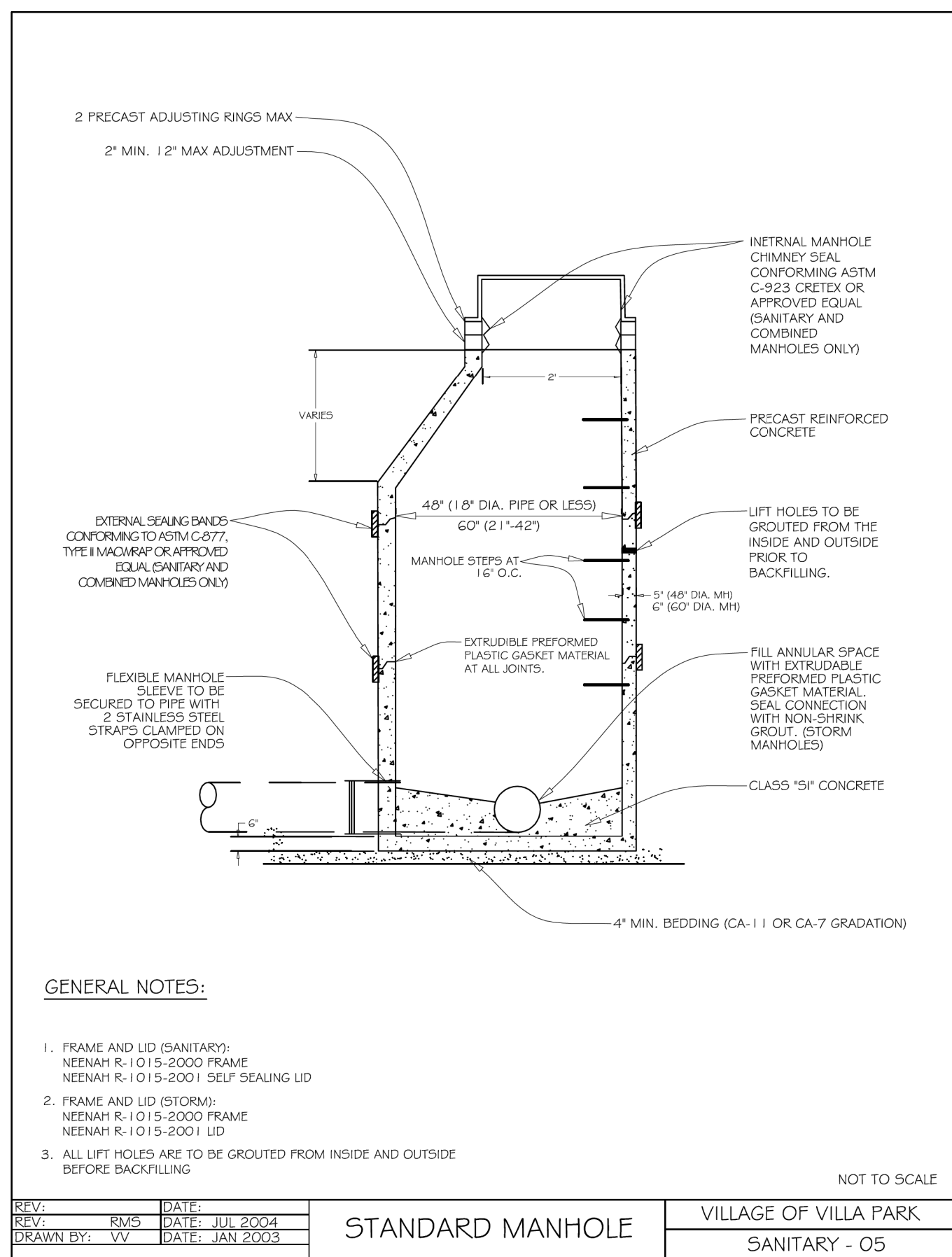
CLIENT:

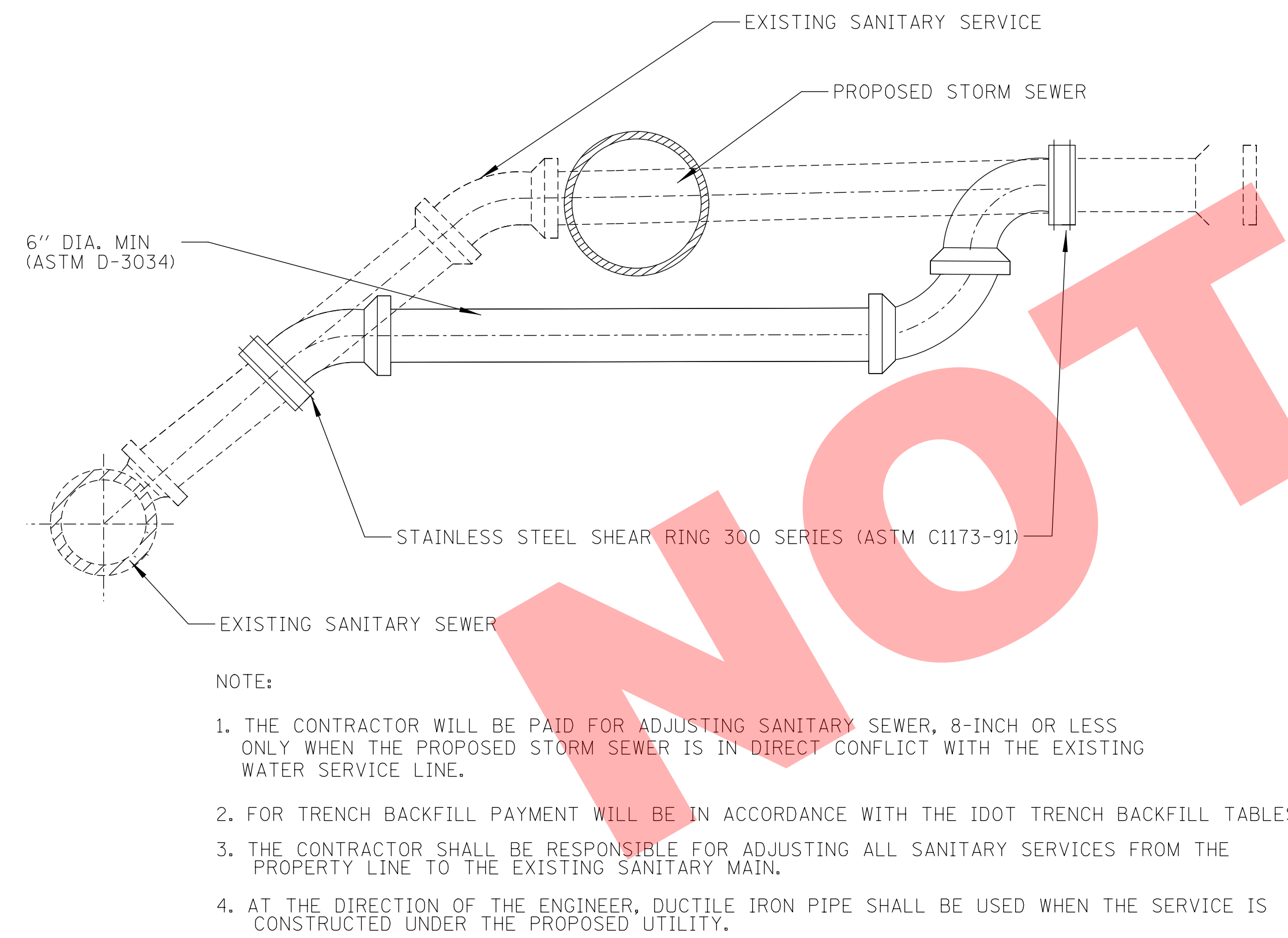
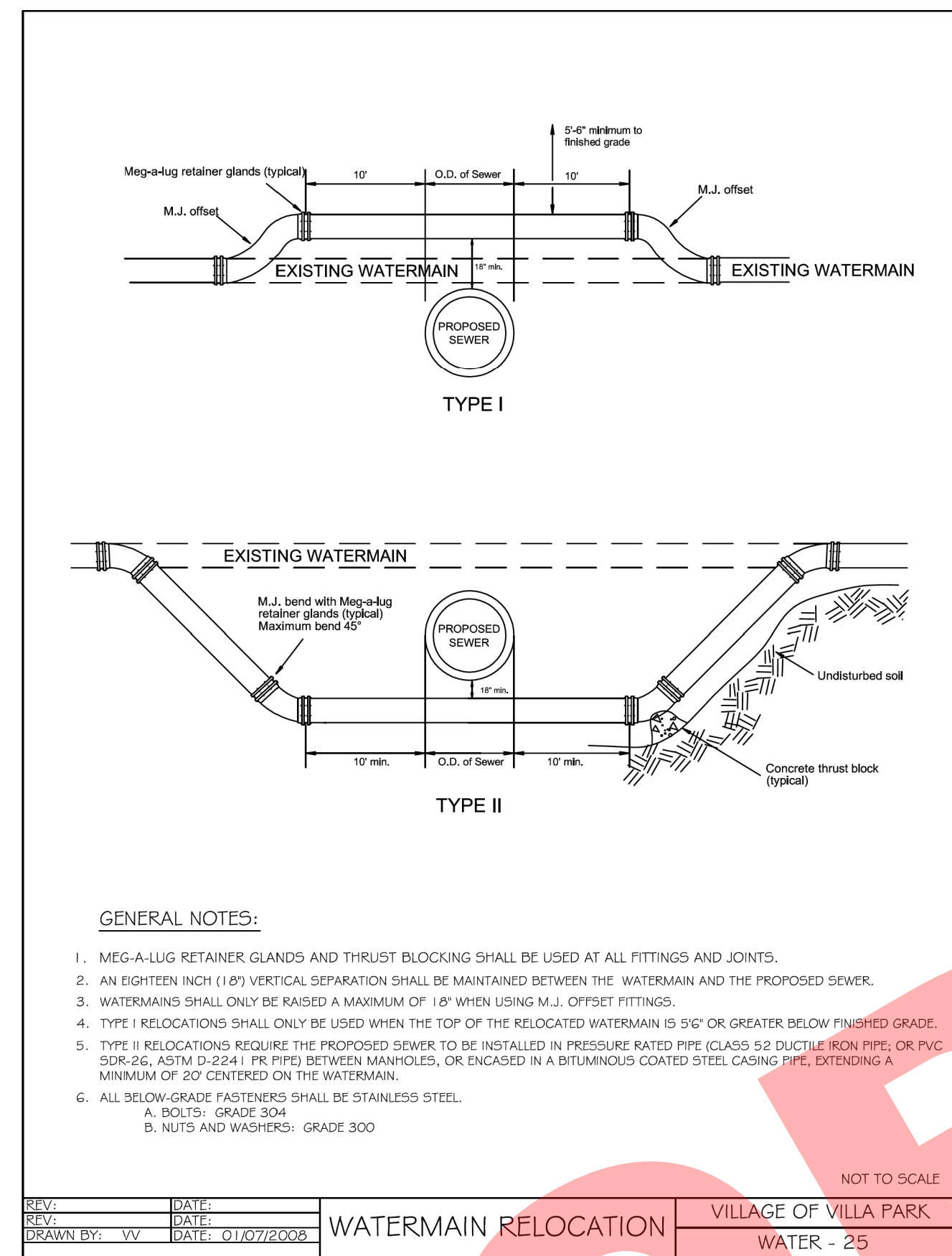
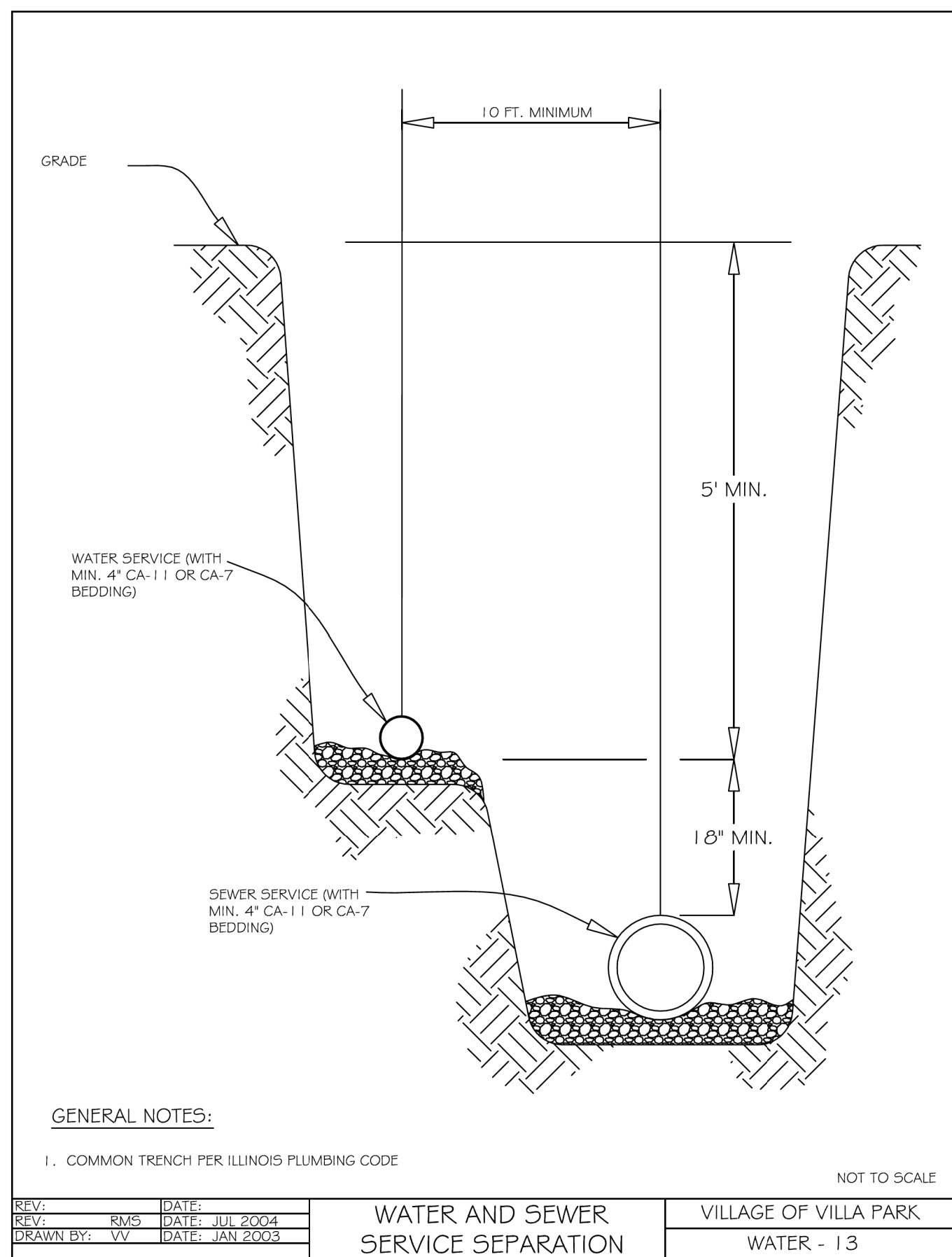
VILLAGE OF VILLA PARK
 20 S. Ardmore Ave.
 Villa Park, IL 60181-2696

NO.	DATE	NATURE OF REVISION	CHKD.	MODEL:

TITLE:
BIERMANN AVENUE COMBINED SEWER SEPARATION PROJECT ALIGNMENT, TIES AND BENCHMARKS

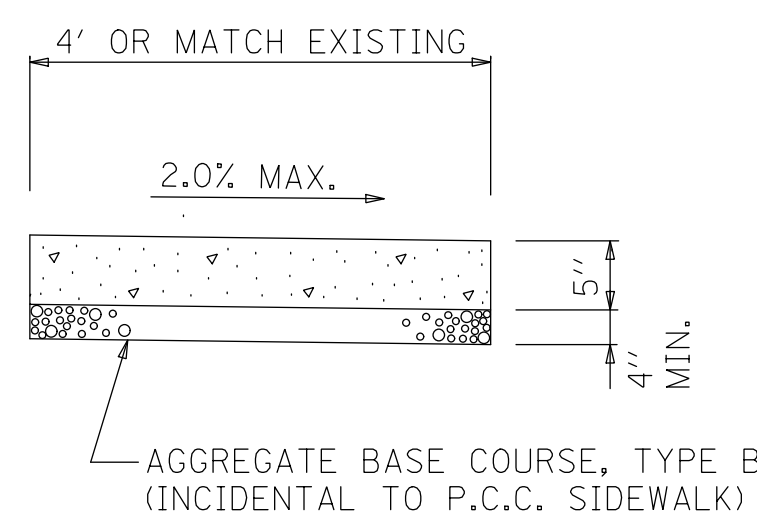
PROJ. No. 140092.00005
 DATE: 5/22/2017
 SHEET 5 OF 10
 DRAWING NO.
5





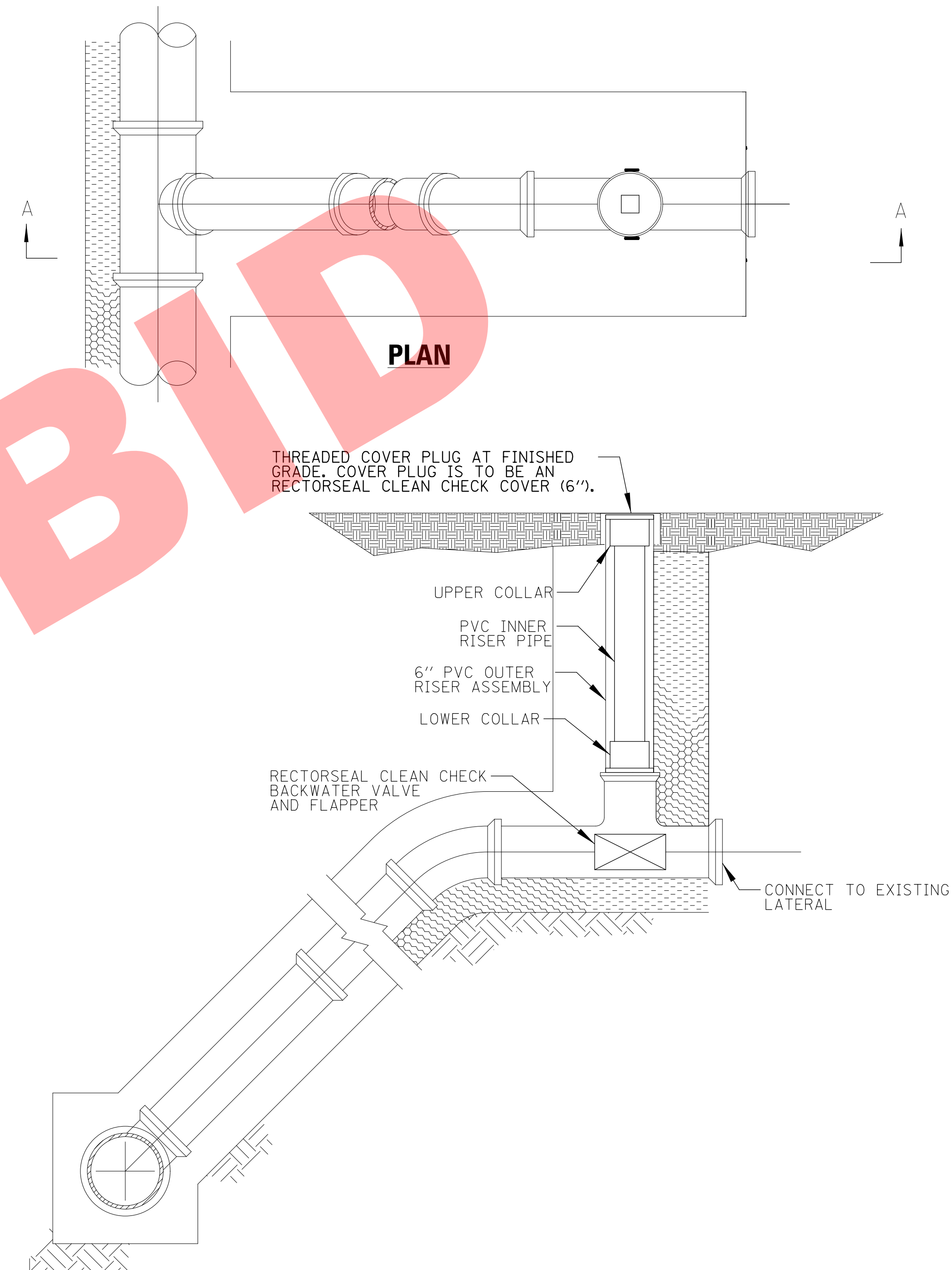
ADJUSTING SANITARY SEWER, 8-INCH OR LESS

**P.C.C. SIDEWALK 5 INCH
DETAIL**



NOTES:

- ALL REQUIRED EARTH EXCAVATION TO CONSTRUCT P.C.C. SIDEWALK SHALL BE INCIDENTAL TO THE P.C.C. SIDEWALK 5 INCH.
- THICKNESS SHALL BE INCREASED TO 6" WHERE SIDEWALK IS ADJACENT TO A CONCRETE DRIVEWAY (COST INCIDENTAL).



GENERAL NOTES:

- CLEANOUT-CHECK VALVE SHALL BE RECTORSEAL CLEAN CHECK BACKWATER VALVE, OR APPROVED EQUAL. ALL MATERIALS AND INSTALLTION SHALL BE IN ACCORDANCE WITH MANUFACTURERS STANDARDS.

COMBINATION CLEANOUT-CHECK VALVE

CHRISTOPHER B. BURKE ENGINEERING, LTD.
 9575 W. Higgins Road, Suite 600
 Rosemont, Illinois 60018
 (847) 823-0500

CLIENT:



VILLAGE OF VILLA PARK
 20 S. Ardmore Ave.
 Villa Park, IL 60181-2696

NO.	DATE	NATURE OF REVISION	CHKD.	MODEL:
				Default
FILE NAME	N:\VILLAPARK\140092.00005\CIVIL\DET_140092_05_02.SHT			

TITLE:

**BIERMANN AVENUE COMBINED
SEWER SEPARATION PROJECT
CONSTRUCTION DETAILS**

PROJ. NO. 140092.00005

DATE: 5/22/2017

SHEET 10 OF 10

DRAWING NO.